

Courtesy Of Fadi Georgi and Megan Benoit Of MaxWell Polaris

\$564,888 - 16715 34 Avenue, Edmonton

MLS® #E4411870

\$564,888

3 Bedroom, 2.50 Bathroom, 1,795 sqft
Single Family on 0.00 Acres

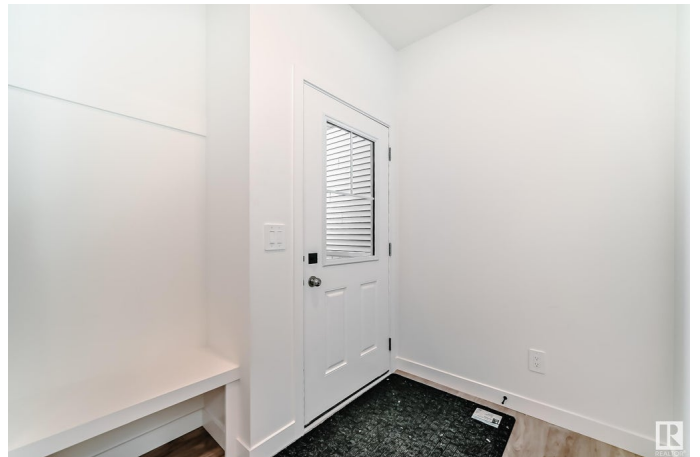
Glenridding Ravine, Edmonton, AB

A welcoming home designed with function in mind, close to the community park and pond. Attached two car garage, future mortgage helper with the ready side door entry & legal suite rough-ins for a legal suite. Welcoming you into the spacious foyer with a built-in bench, the main floor presents a cozy living area with finishes that feel warm and inviting. Kitchen features warm cabinets, 3cm quartz countertops, full height kitchen backsplash, water line to fridge and a large walk in pantry! Continue upstairs to a bonus room with a raised ceiling, laundry room, 4pc bath, two spacious bedrooms and a gorgeous master retreat with vaulted ceilings, two walk in closets and, a 5-piece ensuite featuring walk in shower, soaker tub and double sinks. Possession 35-45 days after removal. Photos of previous build, interior colors are not represented, Virtual tour references the plan only. \$3,000 Appliance Allowance included.

Built in 2024

Essential Information

MLS® #	E4411870
Price	\$564,888
Bedrooms	3
Bathrooms	2.50
Full Baths	2



Half Baths	1
Square Footage	1,795
Acres	0.00
Year Built	2024
Type	Single Family
Sub-Type	Detached Single Family
Style	2 Storey
Status	Active

Community Information

Address	16715 34 Avenue
Area	Edmonton
Subdivision	Glenridding Ravine
City	Edmonton
County	ALBERTA
Province	AB
Postal Code	T6W 5M2

Amenities

Amenities	Ceiling 9 ft., See Remarks
Parking	Double Garage Attached

Interior

Interior Features	ensuite bathroom
Appliances	Garage Control, Garage Opener, Hood Fan, See Remarks
Heating	Forced Air-1, Natural Gas
Stories	2
Has Basement	Yes
Basement	Full, Unfinished

Exterior

Exterior	Wood, Vinyl
Exterior Features	Airport Nearby, Park/Reserve, Public Transportation, Schools, Shopping Nearby, Stream/Pond, See Remarks
Roof	Asphalt Shingles
Construction	Wood, Vinyl
Foundation	Concrete Perimeter

Additional Information

Date Listed October 28th, 2024

Days on Market 137

Zoning Zone 56

DATA IS DEEMED RELIABLE BUT IS NOT GUARANTEED ACCURATE BY THE REALTORS® ASSOCIATION OF EDMONTON. COPYRIGHT 2025 BY THE REALTORS® ASSOCIATION OF EDMONTON. ALL RIGHTS RESERVED. Trademarks are owned or controlled by the Canadian Real Estate Association (CREA) and identify real estate professionals who are members of CREA (REALTOR®, REALTORS®) and/or the quality of services they provide (MLS®, Multiple Listing Service®)

Listing information last updated on March 14th, 2025 at 3:17pm MDT