

\$99,000 - 153 Cypress Drive, Wetaskiwin

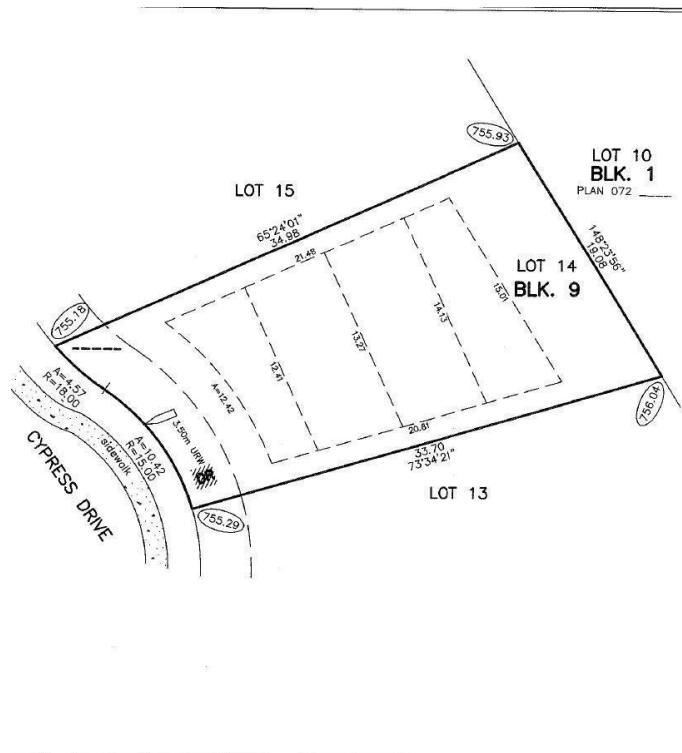
MLS® #E4416202

\$99,000

0 Bedroom, 0.00 Bathroom,
Single Family on 0.00 Acres

Garden Meadows, Wetaskiwin, AB

A stunning lot is available for sale, offering the perfect opportunity to build your dream home in Wetaskiwin, Alberta. Located in Creeks Crossing, one of the city's most sought-after neighborhoods, you'll enjoy a prime location just 20 minutes from Edmonton International Airport. Conveniently close to schools, golf courses, shopping, and more, this safe and welcoming community offers both affordability and all the amenities you need!



Essential Information

MLS® #	E4416202
Price	\$99,000
Bathrooms	0.00
Acres	0.00
Type	Single Family
Sub-Type	Vacant Lot/Land
Status	Active

Community Information

Address	153 Cypress Drive
Area	Wetaskiwin
Subdivision	Garden Meadows
City	Wetaskiwin
County	ALBERTA
Province	AB
Postal Code	T9A 1K6

Exterior

Exterior Features Airport Nearby, Cul-De-Sac, Flat Site, Fruit Trees/Shrubs, Golf Nearby, Playground Nearby, Shopping Nearby

Additional Information

Date Listed December 16th, 2024

Days on Market 116

Zoning Zone 80

DATA IS DEEMED RELIABLE BUT IS NOT GUARANTEED ACCURATE BY THE REALTORS® ASSOCIATION OF EDMONTON. COPYRIGHT 2025 BY THE REALTORS® ASSOCIATION OF EDMONTON. ALL RIGHTS RESERVED. Trademarks are owned or controlled by the Canadian Real Estate Association (CREA) and identify real estate professionals who are members of CREA (REALTOR®, REALTORS®) and/or the quality of services they provide (MLS®, Multiple Listing Service®)

Listing information last updated on April 11th, 2025 at 3:47am MDT