

# \$1,178,800 - 839 Wildwood Crescent, Edmonton

MLS® #E4417110

**\$1,178,800**

7 Bedroom, 6.50 Bathroom, 4,406 sqft

Single Family on 0.00 Acres

Wild Rose, Edmonton, AB

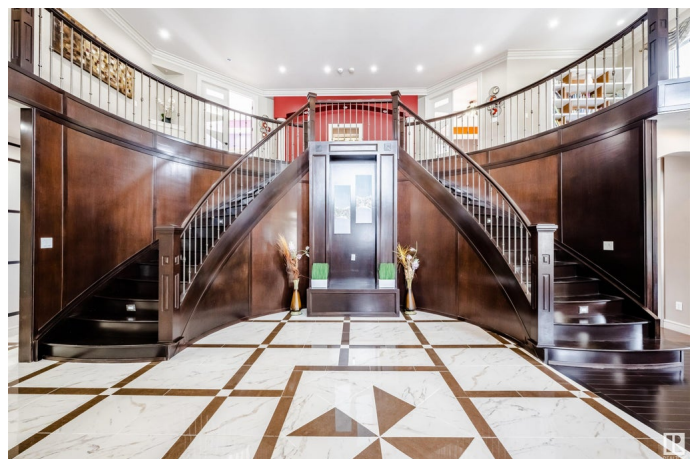
Stunning Custom Built 2 Storey in Wild Rose boasts 4405 + 2057 sqft, 5+2 bdrms, 4+2 baths, FULLY FINISHED WALKOUT bsmnt & triple attached garage. Gleaming tile & hardwood floors welcome you in the spacious entrance. Pass through the formal living rm to the exquisite CUSTOM KITCHEN featuring crisp décor, granite countertops, stunning tile work & light fixtures, large island, stainless steel appliances & SPICE KITCHEN. Flooded with natural light, the open concept floor plan gives direct access to the dining area, den, large family rm with electric fireplace & high ceilings. A 2 pce bath, bedroom/den & mudroom complete this level. A double staircase brings you to a bonus room along with the spacious primary suite featuring 5pce ensuite & walk in closet. 3 additional bdrms, upper floor laundry complete this level. The FULLY FINISHED WALKOUT BASEMENT features family room, theatre, bar, bdrm, and a full separate rental suite with kitchen, 2 bdrms, 4 pce bath. Too many upgrades to list, this home is a MUST SEE!

Built in 2010

## Essential Information

MLS® # E4417110

Price \$1,178,800



Bedrooms	7
Bathrooms	6.50
Full Baths	6
Half Baths	1
Square Footage	4,406
Acres	0.00
Year Built	2010
Type	Single Family
Sub-Type	Detached Single Family
Style	2 Storey
Status	Active

### **Community Information**

Address	839 Wildwood Crescent
Area	Edmonton
Subdivision	Wild Rose
City	Edmonton
County	ALBERTA
Province	AB
Postal Code	T6T 0M1

### **Amenities**

Amenities	Bar, Ceiling 9 ft., Deck, Guest Suite, Patio, Walkout Basement, Wet Bar, See Remarks
Parking Spaces	6
Parking	Heated, Over Sized, Triple Garage Attached

### **Interior**

Interior Features	ensuite bathroom
Appliances	Air Conditioning-Central, Fan-Ceiling, Garage Control, Hood Fan, Oven-Built-In, Oven-Microwave, Stove-Countertop Electric, Stove-Gas, Window Coverings, Dryer-Two, Refrigerators-Two, Washers-Two, Projector, Curtains and Blinds, Garage Heater
Heating	Forced Air-2, Natural Gas
Fireplace	Yes
Fireplaces	Glass Door, Stone Facing
Stories	3
Has Basement	Yes
Basement	Full, Finished

## Exterior

Exterior	Wood, Stone, Stucco
Exterior Features	Airport Nearby, Backs Onto Park/Trees, Corner Lot, Creek, Fenced, Landscaped, Low Maintenance Landscape, Park/Reserve, Playground Nearby, Public Transportation, Ravine View, Schools, Shopping Nearby, See Remarks
Roof	Asphalt Shingles
Construction	Wood, Stone, Stucco
Foundation	Concrete Perimeter

## School Information

Elementary	Verma E. Baker School
Middle	Thelma Chalifoux School
High	Dr. Francis Whiskey Jack

## Additional Information

Date Listed	January 6th, 2025
Days on Market	67
Zoning	Zone 30

DATA IS DEEMED RELIABLE BUT IS NOT GUARANTEED ACCURATE BY THE REALTORS® ASSOCIATION OF EDMONTON. COPYRIGHT 2025 BY THE REALTORS® ASSOCIATION OF EDMONTON. ALL RIGHTS RESERVED. Trademarks are owned or controlled by the Canadian Real Estate Association (CREA) and identify real estate professionals who are members of CREA (REALTOR®, REALTORS®) and/or the quality of services they provide (MLS®, Multiple Listing Service®)

Listing information last updated on March 14th, 2025 at 6:17am MDT