

## \$899,900 - 16 Quesnell Crescent, Edmonton

MLS® #E4419889

**\$899,900**

3 Bedroom, 3.00 Bathroom, 2,305 sqft

Single Family on 0.00 Acres

Quesnell Heights, Edmonton, AB

This stunning, fully updated bungalow offers over 4,000 sq ft of living space on a massive 16,000 sq ft lot. Featuring vaulted ceilings and an open-concept floor plan, the main level is perfect for entertaining with large windows, hardwood floors, and a beautifully updated kitchen. The owner's suite is a luxurious retreat with vaulted ceilings, a walk-in closet, and a spa-like ensuite with dual showers. Two additional bedrooms complete the main floor. The basement offers vinyl flooring, a 4pc bathroom, a family/rec room, flex space, and a workshop. Updates include new electrical, plumbing, windows, and in-floor heating for modern comfort. Step outside to your private backyard, surrounded by mature trees and a garden, large composite deck offering plenty of space for activities and relaxation. Enjoy your hot tub after a long day. The extended 4-car tandem garage with hobby/flex space completes this exceptional home. Situated in the desirable neighborhood of Quesnell don't miss out on this rare opportunity!

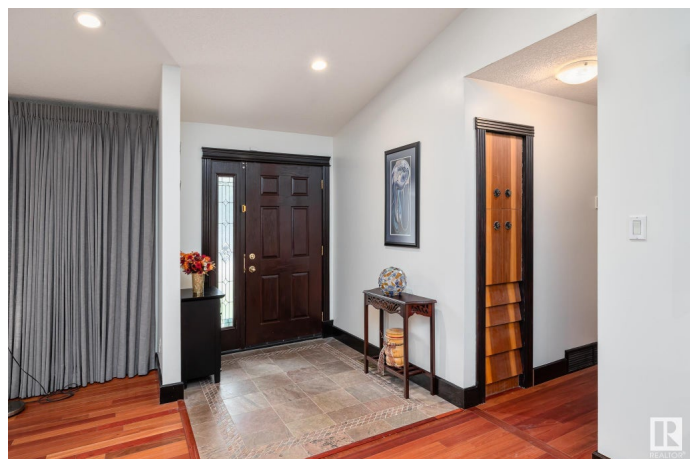
Built in 1968

### Essential Information

MLS® # E4419889

Price \$899,900

Bedrooms 3



Bathrooms	3.00
Full Baths	3
Square Footage	2,305
Acres	0.00
Year Built	1968
Type	Single Family
Sub-Type	Detached Single Family
Style	Bungalow
Status	Active

### Community Information

Address	16 Quesnell Crescent
Area	Edmonton
Subdivision	Quesnell Heights
City	Edmonton
County	ALBERTA
Province	AB
Postal Code	T5R 5N9

### Amenities

Amenities	Air Conditioner, Deck, Detectors Smoke, Exterior Walls- 2"x6", Greenhouse, Hot Tub, Hot Water Natural Gas, Parking-Extra, Workshop
Parking	Quad or More Attached, Tandem

### Interior

Interior Features	ensuite bathroom
Appliances	Dishwasher-Built-In, Dryer, Garage Opener, Refrigerator, Stove-Gas, Washer, Window Coverings, Hot Tub
Heating	Forced Air-1, In Floor Heat System, Natural Gas
Fireplace	Yes
Fireplaces	Mantel
Stories	2
Has Basement	Yes
Basement	Full, Finished

### Exterior

Exterior	Wood, Stone, Vinyl
Exterior Features	Fenced, Landscaped, No Back Lane, Schools
Roof	Asphalt Shingles

Construction	Wood, Stone, Vinyl
Foundation	Concrete Perimeter

**School Information**

Elementary	Patricia Heights School
Middle	Laurier Heights School
High	Jasper Place

**Additional Information**

Date Listed	January 31st, 2025
Days on Market	77
Zoning	Zone 22

DATA IS DEEMED RELIABLE BUT IS NOT GUARANTEED ACCURATE BY THE REALTORS® ASSOCIATION OF EDMONTON. COPYRIGHT 2025 BY THE REALTORS® ASSOCIATION OF EDMONTON. ALL RIGHTS RESERVED.Trademarks are owned or controlled by the Canadian Real Estate Association (CREA) and identify real estate professionals who are members of CREA (REALTOR®, REALTORS®) and/or the quality of services they provide (MLS®, Multiple Listing Service®)

Listing information last updated on April 18th, 2025 at 3:02pm MDT