

\$169,900 - 64 Lancaster Terrace, Edmonton

MLS® #E4424900

\$169,900

3 Bedroom, 1.5 Bathroom, 1,091 sqft
Condo / Townhouse on 0.00 Acres

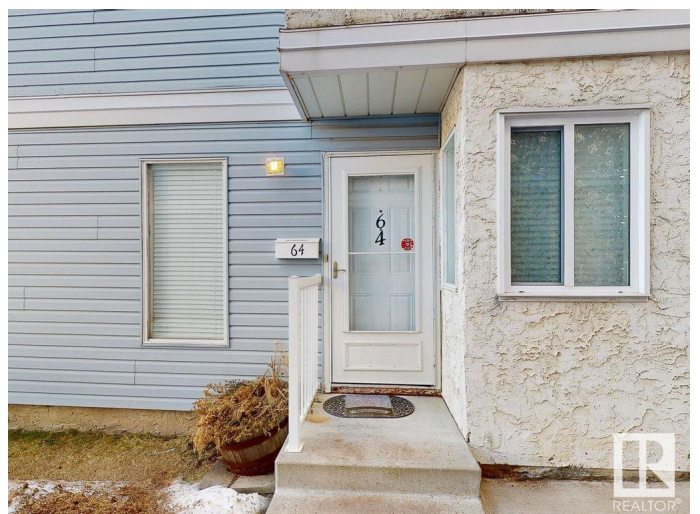
Dunluce, Edmonton, AB

Discover the potential in this charming MAIN LEVEL bungalow carriage home in NW Edmonton! This 1031 sq. ft. CORNER unit offers 3 bedrooms, 1.5 baths, and a maintenance-free vinyl deck—perfect for outdoor enjoyment. Ideally located next to visitor parking, convenience is at your doorstep. Step into a spacious living room with hardwood floors, leading to a large kitchen with vinyl plank flooring, ample counter space, and a versatile utility room for extra storage or a butler’s pantry. The primary bedroom includes a 2-piece ensuite, while two additional bedrooms and an in-suite laundry room add to the home’s functionality. Relax in the jacuzzi soaker tub, store seasonal items in the crawl space or shed, and enjoy covered parking in winter. With a park, spray park, playground, and YMCA nearby, plus easy access to 153 Ave, 127 St, Anthony Henday & Yellowhead, this home just needs a little elbow grease to really shine! Condo fees include water/sewer and all outside maintenance!

Built in 1977

Essential Information

MLS® #	E4424900
Price	\$169,900
Bedrooms	3



Bathrooms	1.50
Full Baths	1
Half Baths	1
Square Footage	1,091
Acres	0.00
Year Built	1977
Type	Condo / Townhouse
Sub-Type	Carriage
Style	Bungalow
Status	Active

Community Information

Address	64 Lancaster Terrace
Area	Edmonton
Subdivision	Dunluce
City	Edmonton
County	ALBERTA
Province	AB
Postal Code	T5X 5S4

Amenities

Amenities	Crawl Space, Detectors Smoke, Hot Water Natural Gas, Parking-Plug-Ins, Parking-Visitor, Patio, Vinyl Windows
Parking Spaces	1
Parking	Stall

Interior

Interior Features	ensuite bathroom
Appliances	Dishwasher-Built-In, Microwave Hood Fan, Refrigerator, Stacked Washer/Dryer, Storage Shed, Stove-Electric, Window Coverings
Heating	Forced Air-1, Natural Gas
Fireplace	Yes
Fireplaces	Brick Facing
Stories	1
Has Basement	Yes
Basement	None, No Basement

Exterior

Exterior	Wood, Stucco, Vinyl
----------	---------------------

Exterior Features	Backs Onto Park/Trees, Fenced, Flat Site, Low Maintenance Landscape, Park/Reserve, Picnic Area, Playground Nearby, Public Swimming Pool, Public Transportation, Recreation Use, Schools, Shopping Nearby
Roof	Asphalt Shingles
Construction	Wood, Stucco, Vinyl
Foundation	Concrete Perimeter

Additional Information

Date Listed	March 10th, 2025
Days on Market	4
Zoning	Zone 27
Condo Fee	\$425

DATA IS DEEMED RELIABLE BUT IS NOT GUARANTEED ACCURATE BY THE REALTORS® ASSOCIATION OF EDMONTON. COPYRIGHT 2025 BY THE REALTORS® ASSOCIATION OF EDMONTON. ALL RIGHTS RESERVED. Trademarks are owned or controlled by the Canadian Real Estate Association (CREA) and identify real estate professionals who are members of CREA (REALTOR®, REALTORS®) and/or the quality of services they provide (MLS®, Multiple Listing Service®)

Listing information last updated on March 14th, 2025 at 11:32am MDT