

\$365,000 - 209 11660 79 Avenue, Edmonton

MLS® #E4425404

\$365,000

2 Bedroom, 2.00 Bathroom, 1,117 sqft
Condo / Townhouse on 0.00 Acres

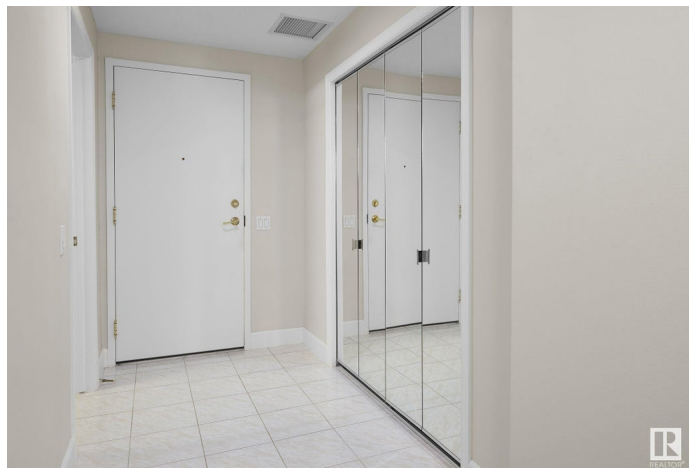
Belgravia, Edmonton, AB

Welcome to the historic community of Belgravia with tree lined boulevards & cafes. An adults only building perfect for UofA professionals, parents of students looking to invest in a condo for their post secondary children returning to UofA or snowbirds looking for a place to stay while summering in Edmonton. Enjoy easy access to the River Valley, the UofA hospital, Cross Cancer Clinic & the popular Whyte Avenue restaurant & shopping areas! This beautiful condo located in the heart of Belgravia is just over 1117sqft of living space â€“ 2 bedrooms, 2 bathrooms, laundry room, in suite storage, spacious living room with gas fire place, underground heated parking & more. The perfect location for every buyer & this condo has had many upgrades throughout the years!

Built in 1992

Essential Information

| | |
|----------------|-----------|
| MLS® # | E4425404 |
| Price | \$365,000 |
| Bedrooms | 2 |
| Bathrooms | 2.00 |
| Full Baths | 2 |
| Square Footage | 1,117 |
| Acres | 0.00 |
| Year Built | 1992 |



| | |
|----------|------------------------|
| Type | Condo / Townhouse |
| Sub-Type | Lowrise Apartment |
| Style | Single Level Apartment |
| Status | Active |

Community Information

| | |
|-------------|---------------------|
| Address | 209 11660 79 Avenue |
| Area | Edmonton |
| Subdivision | Belgravia |
| City | Edmonton |
| County | ALBERTA |
| Province | AB |
| Postal Code | T6G 0P7 |

Amenities

| | |
|----------------|---|
| Amenities | Air Conditioner, Detectors Smoke, No Animal Home, No Smoking Home, Parking-Visitor, Secured Parking, Security Door, Vinyl Windows |
| Parking Spaces | 1 |
| Parking | Heated, Underground |

Interior

| | |
|-------------------|--|
| Interior Features | ensuite bathroom |
| Appliances | Air Conditioning-Central, Dishwasher-Built-In, Dryer, Hood Fan, Oven-Built-In, Oven-Microwave, Refrigerator, Stove-Countertop Electric, Washer, Window Coverings |
| Heating | In Floor Heat System, Natural Gas |
| Fireplace | Yes |
| Fireplaces | Glass Door |
| # of Stories | 3 |
| Stories | 1 |
| Has Basement | Yes |
| Basement | None, No Basement |

Exterior

| | |
|-------------------|---|
| Exterior | Wood, Stucco |
| Exterior Features | Landscaped, Low Maintenance Landscape, Park/Reserve, Public Transportation, Schools, Shopping Nearby, Treed Lot |
| Roof | Asphalt Shingles |
| Construction | Wood, Stucco |

Foundation Concrete Perimeter

School Information

Elementary McKernan School

Middle McKernan School

High Strathcona School

Additional Information

Date Listed March 13th, 2025

Days on Market 1

Zoning Zone 15

Condo Fee \$705

DATA IS DEEMED RELIABLE BUT IS NOT GUARANTEED ACCURATE BY THE REALTORS® ASSOCIATION OF EDMONTON. COPYRIGHT 2025 BY THE REALTORS® ASSOCIATION OF EDMONTON. ALL RIGHTS RESERVED. Trademarks are owned or controlled by the Canadian Real Estate Association (CREA) and identify real estate professionals who are members of CREA (REALTOR®, REALTORS®) and/or the quality of services they provide (MLS®, Multiple Listing Service®)

Listing information last updated on March 14th, 2025 at 11:32am MDT