

# \$369,900 - 16 20 Norman Court, St. Albert

MLS® #E4425509

**\$369,900**

3 Bedroom, 3.50 Bathroom, 1,420 sqft  
Condo / Townhouse on 0.00 Acres

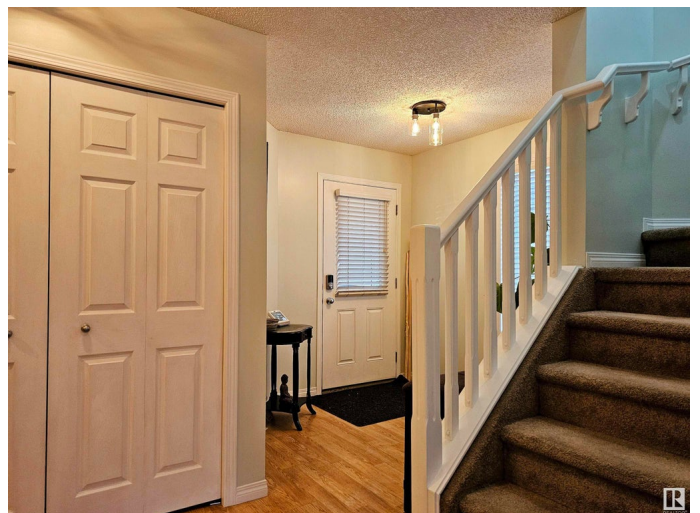
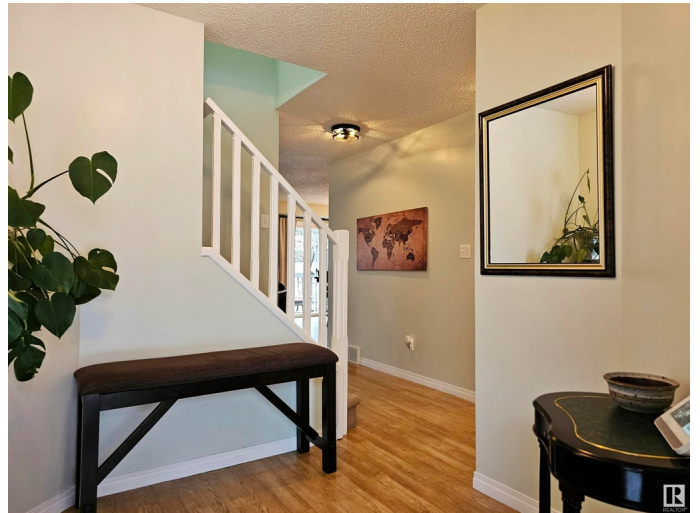
North Ridge, St. Albert, AB

Exceptional opportunity to own this fully developed 3 bed/3.5 bath half duplex situated in the well maintained complex of Norissa Heights in North Ridge. The open concept main floor features a large foyer, access to a double attached garage, half bath, kitchen, family room with gas fireplace and dining area that leads to a private deck with fully fenced yard. Upstairs you will find 2 generously sized primary suites, each with their own full baths with an abundance of closet space. The fully finished basement offers a comfortable family room, 3rd bedroom, laundry and full bathroom. Recent updates include: Roof(2023), dishwasher(2023), stove(2018), furnace/ducts cleaned(2024), main & second floor paint(2024), most light fixtures(2025), carpets professionally cleaned(2025). A/C also included. Close to schools, walking trails and parks with easy access to the Anthony Henday.

Built in 2005

## Essential Information

MLS® #	E4425509
Price	\$369,900
Bedrooms	3
Bathrooms	3.50
Full Baths	3



Half Baths	1
Square Footage	1,420
Acres	0.00
Year Built	2005
Type	Condo / Townhouse
Sub-Type	Half Duplex
Style	2 Storey
Status	Active

### **Community Information**

Address	16 20 Norman Court
Area	St. Albert
Subdivision	North Ridge
City	St. Albert
County	ALBERTA
Province	AB
Postal Code	T8N 7K4

### **Amenities**

Amenities	Deck, Parking-Visitor
Parking	Double Garage Attached

### **Interior**

Interior Features	ensuite bathroom
Appliances	Air Conditioning-Central, Dishwasher-Built-In, Dryer, Freezer, Garage Control, Garage Opener, Hood Fan, Refrigerator, Stove-Electric, Washer, Window Coverings
Heating	Forced Air-1, Natural Gas
Stories	3
Has Basement	Yes
Basement	Full, Finished

### **Exterior**

Exterior	Wood, Vinyl
Exterior Features	Fenced, Golf Nearby, No Back Lane, Playground Nearby, Schools, Shopping Nearby
Roof	Asphalt Shingles
Construction	Wood, Vinyl
Foundation	Concrete Perimeter

## Additional Information

Date Listed March 13th, 2025

Days on Market 1

Zoning Zone 24

Condo Fee \$394

DATA IS DEEMED RELIABLE BUT IS NOT GUARANTEED ACCURATE BY THE REALTORS® ASSOCIATION OF EDMONTON. COPYRIGHT 2025 BY THE REALTORS® ASSOCIATION OF EDMONTON. ALL RIGHTS RESERVED. Trademarks are owned or controlled by the Canadian Real Estate Association (CREA) and identify real estate professionals who are members of CREA (REALTOR®, REALTORS®) and/or the quality of services they provide (MLS®, Multiple Listing Service®)

Listing information last updated on March 14th, 2025 at 11:32am MDT