

\$775,000 - 3108 111b Street, Edmonton

MLS® #E4425528

\$775,000

4 Bedroom, 3.00 Bathroom, 1,618 sqft
Single Family on 0.00 Acres

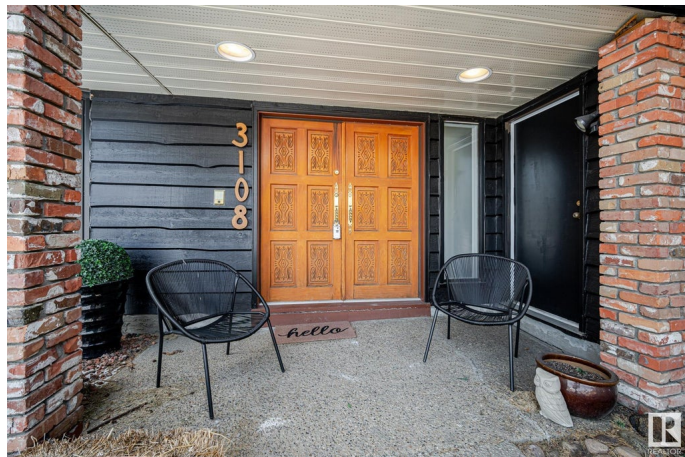
Sweet Grass, Edmonton, AB

Beautifully Renovated Bungalow in Desirable Sweet Grass, Southwest Edmonton! Welcome to this stunning 1,600+ sq. ft. bungalow in the sought-after community of Sweet Grass! This beautifully renovated 4-bedroom, 3-bathroom home offers a modern open-concept floor plan with new flooring, fresh paint, and a brand-new kitchen featuring sleek cabinetry and stylish finishes. Both main floor bathrooms have been fully updated, adding a touch of luxury. Enjoy peace of mind with recent upgrades, including NEW WINDOWS, ROOF, FURNACE, and A/C, ensuring year-round comfort and efficiency. The huge HEATED oversized garage provides ample space for parking, storage, or a workshop. Located in Southwest Edmonton, Sweet Grass is a family-friendly community close to top-rated schools, parks, shopping, and public transit. Don't miss this move-in-ready gem!!

Built in 1980

Essential Information

MLS® #	E4425528
Price	\$775,000
Bedrooms	4
Bathrooms	3.00
Full Baths	3
Square Footage	1,618



Acres	0.00
Year Built	1980
Type	Single Family
Sub-Type	Detached Single Family
Style	Bungalow
Status	Active

Community Information

Address	3108 111b Street
Area	Edmonton
Subdivision	Sweet Grass
City	Edmonton
County	ALBERTA
Province	AB
Postal Code	T6J 3Y2

Amenities

Amenities	Air Conditioner
Parking	Double Garage Attached, Over Sized

Interior

Interior Features	ensuite bathroom
Appliances	Air Conditioning-Central, Dishwasher-Built-In, Dryer, Oven-Built-In, Oven-Microwave, Refrigerator, Stove-Electric, Washer, Garage Heater
Heating	Forced Air-2, Natural Gas
Stories	2
Has Basement	Yes
Basement	Full, Partially Finished

Exterior

Exterior	Wood
Exterior Features	Fenced, Flat Site, Level Land, No Back Lane, Schools, Shopping Nearby
Roof	Asphalt Shingles
Construction	Wood
Foundation	Concrete Perimeter

Additional Information

Date Listed	March 13th, 2025
Days on Market	1

Zoning

Zone 16

DATA IS DEEMED RELIABLE BUT IS NOT GUARANTEED ACCURATE BY THE REALTORS® ASSOCIATION OF EDMONTON. COPYRIGHT 2025 BY THE REALTORS® ASSOCIATION OF EDMONTON. ALL RIGHTS RESERVED. Trademarks are owned or controlled by the Canadian Real Estate Association (CREA) and identify real estate professionals who are members of CREA (REALTOR®, REALTORS®) and/or the quality of services they provide (MLS®, Multiple Listing Service®)

Listing information last updated on March 14th, 2025 at 11:17am MDT