

\$445,000 - 147 West Liberty Crescent, Millet

MLS® #E4426771

\$445,000

4 Bedroom, 3.50 Bathroom, 1,856 sqft
Single Family on 0.00 Acres

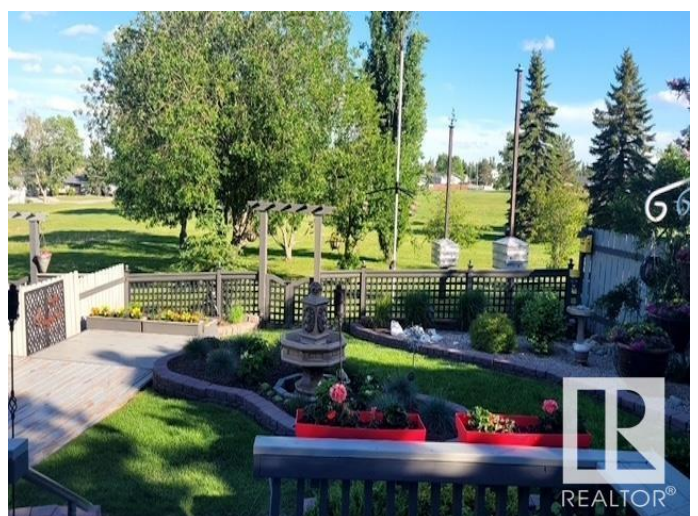
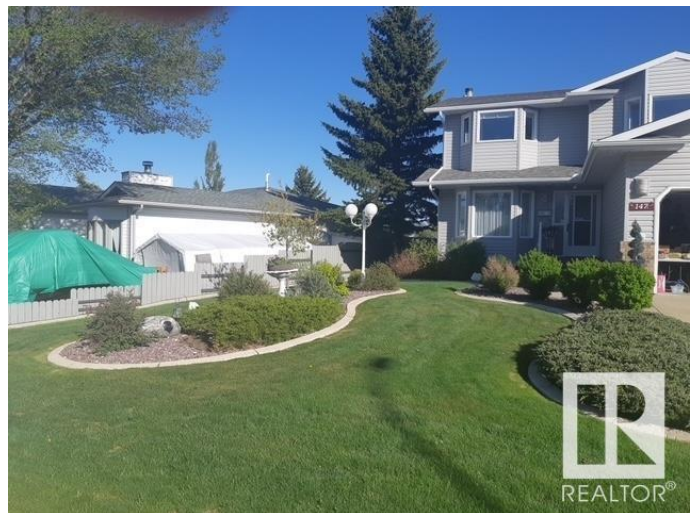
Millet, Millet, AB

This charming 1,850 sq. ft. 2-storey home in Millet, has double attached garage and RV parking. This beautifully maintained home backs onto a park and community gardens. Recent upgrades include newer shingles, furnace, hot water tank, cement sidewalks, and some triple-pane windows. The main floor features a formal dining room, front living room, spacious kitchen, and a cozy family room with a wood-burning fireplace, along with a convenient half bath. Upstairs, you'll find three generous bedrooms and two full bathrooms, including a primary ensuite. The partially developed basement offers an additional bedroom and a 3-piece bath. The backyard is a true retreat, featuring a gazebo, lion fountain, and vegetable garden boxes, all with a beautiful view of the park. Conveniently located close to schools and shopping, this home is a must-see!

Built in 1991

Essential Information

| | |
|------------|-----------|
| MLS® # | E4426771 |
| Price | \$445,000 |
| Bedrooms | 4 |
| Bathrooms | 3.50 |
| Full Baths | 3 |
| Half Baths | 1 |



| | |
|----------------|------------------------|
| Square Footage | 1,856 |
| Acres | 0.00 |
| Year Built | 1991 |
| Type | Single Family |
| Sub-Type | Detached Single Family |
| Style | 2 Storey |
| Status | Active |

Community Information

| | |
|-------------|---------------------------|
| Address | 147 West Liberty Crescent |
| Area | Millet |
| Subdivision | Millet |
| City | Millet |
| County | ALBERTA |
| Province | AB |
| Postal Code | T0C 1Z0 |

Amenities

| | |
|-----------|------------------------------------|
| Amenities | Deck, Gazebo |
| Parking | Double Garage Attached, RV Parking |

Interior

| | |
|-------------------|---|
| Interior Features | ensuite bathroom |
| Appliances | Alarm/Security System, Dishwasher-Built-In, Dryer, Garage Control, Garage Opener, Refrigerator, Storage Shed, Stove-Electric, Washer, Window Coverings, See Remarks, TV Wall Mount, Curtains and Blinds |
| Heating | Forced Air-1, Natural Gas |
| Fireplace | Yes |
| Fireplaces | Glass Door |
| Stories | 2 |
| Has Basement | Yes |
| Basement | Full, Partially Finished |

Exterior

| | |
|-------------------|--|
| Exterior | Wood, Vinyl |
| Exterior Features | Backs Onto Park/Trees, Fenced, Landscaped, Playground Nearby, Schools, Shopping Nearby |
| Roof | Asphalt Shingles |
| Construction | Wood, Vinyl |

Foundation Concrete Perimeter

Additional Information

Date Listed March 20th, 2025

Days on Market 15

Zoning Zone 80

DATA IS DEEMED RELIABLE BUT IS NOT GUARANTEED ACCURATE BY THE REALTORS® ASSOCIATION OF EDMONTON. COPYRIGHT 2025 BY THE REALTORS® ASSOCIATION OF EDMONTON. ALL RIGHTS RESERVED. Trademarks are owned or controlled by the Canadian Real Estate Association (CREA) and identify real estate professionals who are members of CREA (REALTOR®, REALTORS®) and/or the quality of services they provide (MLS®, Multiple Listing Service®)

Listing information last updated on April 4th, 2025 at 12:32pm MDT