

Courtesy Of Sam Killick and Jakie K Ng Of ARIVL

\$293,000 - 214 10523 123 Street, Edmonton

MLS® #E4426843

\$293,000

2 Bedroom, 2.00 Bathroom, 888 sqft
Condo / Townhouse on 0.00 Acres

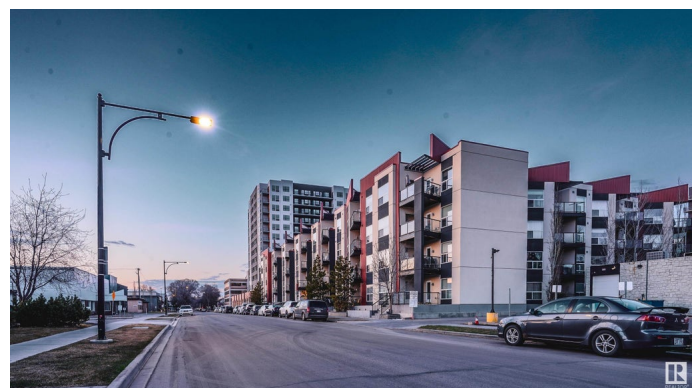
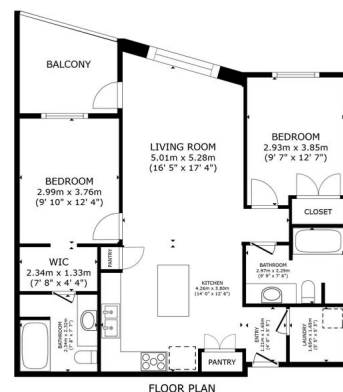
Westmount, Edmonton, AB

MODERN 2-BED, 2-BATH CONDO W/ A/C, IN-SUITE LAUNDRY & UNDERGROUND PARKING – STEPS TO 124 ST & BREWERY DISTRICT! Welcome to High Street District Properties – a stylish, centrally located home designed for the ultimate urban lifestyle. Just steps from Edmonton’s best cafes, bakeries, breweries, restaurants, and cocktail bars, plus easy access to the river valley, bike paths & dog park! This bright & functional layout features 2 separated bedrooms (perfect for roommates!), an open-concept kitchen & living space with a massive island, and stunning west-facing windows for gorgeous sunset views. Enjoy summer nights on the spacious balcony w/ gas hookup! Upgrades include engineered hardwood, sleek stainless steel appliances, tile backsplash, a central heat pump w/ A/C, big windows, front-load laundry & tons of closet space. Plus, enjoy underground parking & a rooftop patio! And the top it all, it's pet friendly! Move-in ready – come see it today!

Built in 2013

Essential Information

| | |
|----------|-----------|
| MLS® # | E4426843 |
| Price | \$293,000 |
| Bedrooms | 2 |



| | |
|----------------|------------------------|
| Bathrooms | 2.00 |
| Full Baths | 2 |
| Square Footage | 888 |
| Acres | 0.00 |
| Year Built | 2013 |
| Type | Condo / Townhouse |
| Sub-Type | Lowrise Apartment |
| Style | Single Level Apartment |
| Status | Active |

Community Information

| | |
|-------------|----------------------|
| Address | 214 10523 123 Street |
| Area | Edmonton |
| Subdivision | Westmount |
| City | Edmonton |
| County | ALBERTA |
| Province | AB |
| Postal Code | T5N 1N9 |

Amenities

| | |
|----------------|----------------------------------|
| Amenities | Air Conditioner, Parking-Visitor |
| Parking Spaces | 1 |
| Parking | Heated, Underground |

Interior

| | |
|-------------------|--|
| Interior Features | ensuite bathroom |
| Appliances | Air Conditioning-Central, Dishwasher-Built-In, Dryer, Garage Control, Microwave Hood Fan, Refrigerator, Stove-Electric, Washer |
| Heating | Heat Pump, Electric, Natural Gas |
| # of Stories | 4 |
| Stories | 4 |
| Has Basement | Yes |
| Basement | None, No Basement |

Exterior

| | |
|-------------------|--|
| Exterior | Wood, Metal, Stucco |
| Exterior Features | Public Transportation, Shopping Nearby |
| Roof | Roll Roofing |
| Construction | Wood, Metal, Stucco |

Foundation Concrete Perimeter

School Information

Elementary W&hkw&ant&win School

Middle Westminster School

High Victoria School

Additional Information

Date Listed March 21st, 2025

Days on Market 28

Zoning Zone 07

Condo Fee \$592

DATA IS DEEMED RELIABLE BUT IS NOT GUARANTEED ACCURATE BY THE REALTORS® ASSOCIATION OF EDMONTON. COPYRIGHT 2025 BY THE REALTORS® ASSOCIATION OF EDMONTON. ALL RIGHTS RESERVED. Trademarks are owned or controlled by the Canadian Real Estate Association (CREA) and identify real estate professionals who are members of CREA (REALTOR®, REALTORS®) and/or the quality of services they provide (MLS®, Multiple Listing Service®)

Listing information last updated on April 18th, 2025 at 4:17pm MDT