

\$799,000 - 81 Enchanted Way, St. Albert

MLS® #E4427002

\$799,000

4 Bedroom, 3.50 Bathroom, 2,228 sqft
Single Family on 0.00 Acres

Erin Ridge North, St. Albert, AB

Welcome to this immaculate former SHOWHOME featuring QUALITY CRAFTSMANSHIP throughout. 2228 sq ft plus a FULLY DEVELOPED BASEMENT. From the moment you walk in, youâ€™re greeted with ELEGANCE. Glass railings and beautiful engineered floor flow throughout the home. The open-concept main floor showcases a chef-inspired kitchen which seamlessly connects to the dining & living areas, making it perfect for comfort & entertaining around a cozy fireplace. The upstairs master suite includes a tranquil ensuite and walk-in closet. Upstairs also includes a generous bonus room, 2 spacious bedrooms and convenient laundry room. The basement features the perfect rec room with a wet bar, full bath, second fireplace and the 4th bedroom. A gorgeous Duradeck surfaced deck, and exquisite landscaping highlight the backyard. The fully finished oversized double garage has been recently updated with new flooring and hexagon lighting. This home is an absolute 10+ and ready for you to move in and enjoy its many luxuries.

Built in 2015

Essential Information

MLS® #	E4427002
Price	\$799,000



Bedrooms	4
Bathrooms	3.50
Full Baths	3
Half Baths	1
Square Footage	2,228
Acres	0.00
Year Built	2015
Type	Single Family
Sub-Type	Detached Single Family
Style	2 Storey
Status	Active

Community Information

Address	81 Enchanted Way
Area	St. Albert
Subdivision	Erin Ridge North
City	St. Albert
County	ALBERTA
Province	AB
Postal Code	T8N 7R7

Amenities

Amenities	Air Conditioner, Ceiling 10 ft., Hot Water Natural Gas, Wet Bar, Natural Gas BBQ Hookup
Parking	Double Garage Attached

Interior

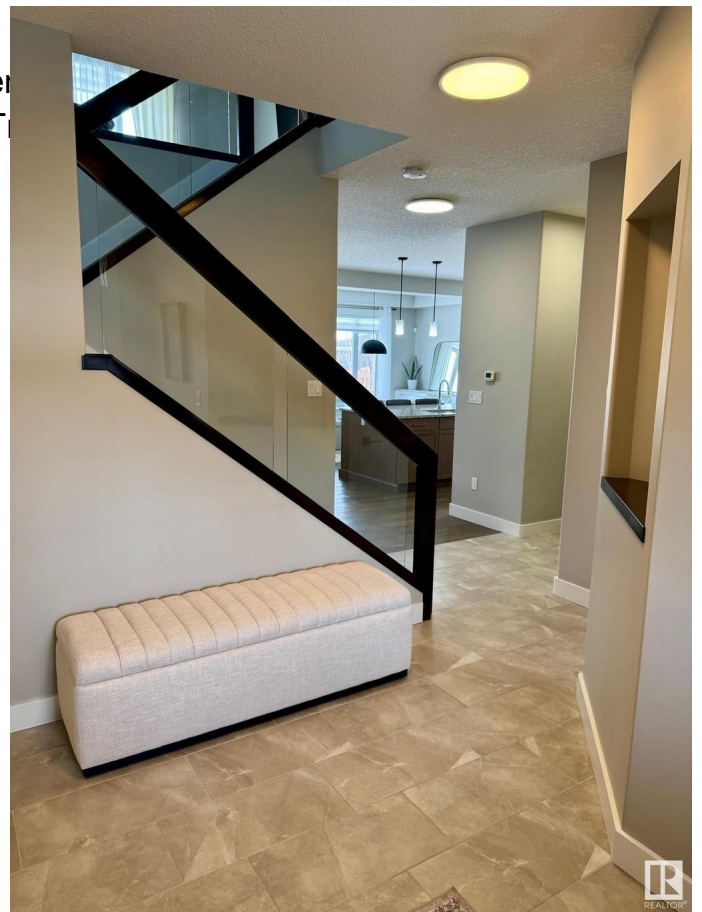
Interior Features	ensuite bathroom
Appliances	Air Conditioning-Central, Alarm/Security System, Dishwasher-Built-In, Dryer, Garage Control, Garage Opener, Hood Fan, Oven-Microwave, Refrigerator, Storage Shed, Stove-Electric, Washer, Window Coverings, Wine/Beverage Cooler, Wet Bar
Heating	Forced Air-1, Natural Gas
Fireplace	Yes
Fireplaces	Insert
Stories	3
Has Basement	Yes
Basement	Full, Finished

Exterior

Exterior Wood, Stone, Vinyl
Exterior Features Backs Onto Park/Trees, Fenced Backyard, Playground Nearby, Public Transit
Roof Asphalt Shingles
Construction Wood, Stone, Vinyl
Foundation Concrete Perimeter

Additional Information

Date Listed March 22nd, 2025
Days on Market 20
Zoning Zone 24



DATA IS DEEMED RELIABLE BUT IS NOT GUARANTEED ACCURATE BY THE REALTORS® ASSOCIATION OF EDMONTON. COPYRIGHT 2025 BY THE REALTORS® ASSOCIATION OF EDMONTON. ALL RIGHTS RESERVED. Trademarks are owned or controlled by the Canadian Real Estate Association (CREA) and identify real estate professionals who are members of CREA (REALTOR®, REALTORS®) and/or the quality of services they provide (MLS®, Multiple Listing Service®)

Listing information last updated on April 11th, 2025 at 9:32am MDT