

\$198,800 - 5 11913 103 Street, Edmonton

MLS® #E4428359

\$198,800

2 Bedroom, 1.50 Bathroom, 725 sqft

Condo / Townhouse on 0.00 Acres

Westwood (Edmonton), Edmonton, AB

Don't let the square footage sway you as this 725 sq.ft. multi-level 2 bedroom, 1.5 bathroom unit is roomy, just had new carpet installed, and is move-in ready! The main floor has a spacious living room, kitchen, half bath, and large pantry/storage room. The lower level has the two bedrooms, full bathroom, and laundry/utility room. The unit is west facing with a veranda, and located close to transit, Kingsway Mall, and NAIT, making it a good rental property or for a budget-conscious buyer.

Built in 2009



Essential Information

MLS® #	E4428359
Price	\$198,800
Bedrooms	2
Bathrooms	1.50
Full Baths	1
Half Baths	1
Square Footage	725
Acres	0.00
Year Built	2009
Type	Condo / Townhouse
Sub-Type	Lowrise Apartment
Style	Multi Level Apartment
Status	Active

Community Information

Address 5 11913 103 Street
Area Edmonton
Subdivision Westwood (Edmonton)
City Edmonton
County ALBERTA
Province AB
Postal Code T5G 2J4

Amenities

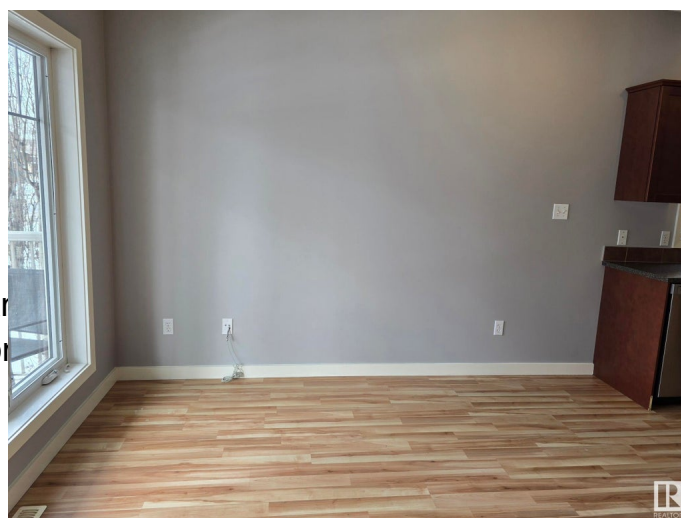
Amenities Detectors Smoke, Front Porc
Parking Stall

Interior

Appliances Dishwasher-Built-In, Dryer,
Washer
Heating Forced Air-1, Natural Gas
of Stories 3
Stories 2
Has Basement Yes
Basement Full, Finished

Exterior

Exterior Wood, Stucco
Exterior Features Back Lane, Low Maintenanc
Nearby, Public Transportation
Roof Asphalt Shingles
Construction Wood, Stucco
Foundation Concrete Perimeter



Additional Information

Date Listed April 1st, 2025
Days on Market 11
Zoning Zone 08
Condo Fee \$218

DATA IS DEEMED RELIABLE BUT IS NOT GUARANTEED ACCURATE BY THE REALTORS® ASSOCIATION OF EDMONTON. COPYRIGHT 2025 BY THE REALTORS® ASSOCIATION OF EDMONTON. ALL RIGHTS RESERVED. Trademarks are owned or controlled by the Canadian Real Estate Association (CREA) and identify real estate professionals who are members of CREA (REALTOR®, REALTORS®) and/or the quality of services they provide (MLS®, Multiple Listing Service®)

Listing information last updated on April 11th, 2025 at 10:17pm MDT