

\$549,900 - 6 Erinwoods Place, St. Albert

MLS® #E4428598

\$549,900

3 Bedroom, 2.50 Bathroom, 1,874 sqft
Single Family on 0.00 Acres

Erin Ridge, St. Albert, AB

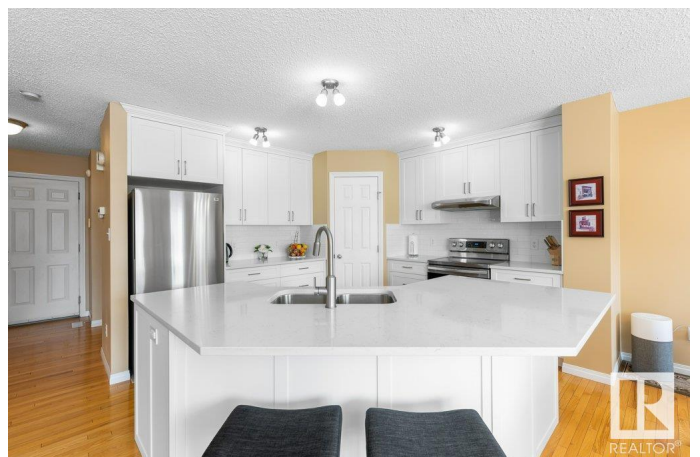
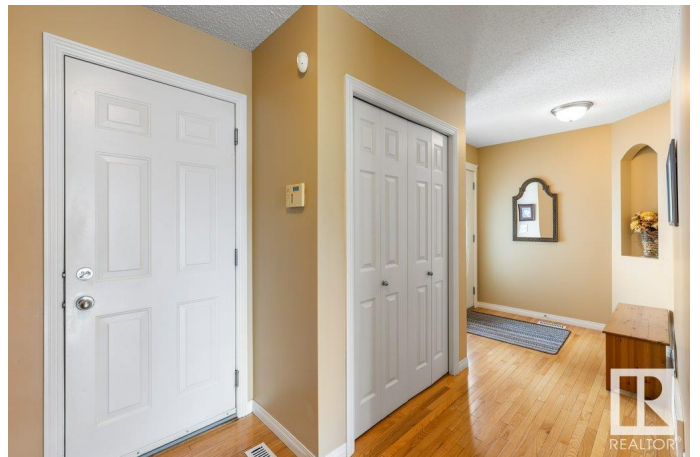
Discover the perfect blend of comfort, style & convenience in this impeccable 1841 sq ft two-storey home located in family friendly Erin Ridge steps from walkways, parks & all conveniences. Nestled in a quiet cul-de-sac, this allergen-free, air conditioned haven boasts hardwood & laminate flooring, ensuring a clean & inviting atmosphere for your family. Enjoy the open-concept main floor that seamlessly connects the living area with a cozy gas fireplace to a newly renovated kitchen featuring a large island ideal for entertaining. Upstairs features second-floor laundry, a large bonus room with vaulted ceilings & 3 spacious bedrooms including a primary with 5' walk-in shower & jetted tub and generous walk-in closet. The fully developed basement provides an exercise area & family room (easily converted to 4th bedroom), plus storage. Take full advantage of enjoyable outdoor living in the fully landscaped yard complete with an exposed aggregate 24'x17' patio, mature trees & RV parking. An absolute 10+ home!

Built in 2002

Essential Information

MLS® # E4428598

Price \$549,900



Bedrooms	3
Bathrooms	2.50
Full Baths	2
Half Baths	1
Square Footage	1,874
Acres	0.00
Year Built	2002
Type	Single Family
Sub-Type	Detached Single Family
Style	2 Storey
Status	Active

Community Information

Address	6 Erinwoods Place
Area	St. Albert
Subdivision	Erin Ridge
City	St. Albert
County	ALBERTA
Province	AB
Postal Code	T8N 7B2

Amenities

Amenities	Patio
Parking	Double Garage Attached

Interior

Interior Features	ensuite bathroom
Appliances	Air Conditioning-Central, Dishwasher-Built-In, Dryer, Freezer, Garage Control, Garage Opener, Hood Fan, Refrigerator, Stove-Electric, Washer, Window Coverings
Heating	Forced Air-1, Natural Gas
Fireplace	Yes
Fireplaces	Mantel
Stories	3
Has Basement	Yes
Basement	Full, Finished

Exterior

Exterior	Wood, Vinyl
----------	-------------

Exterior Features	Fenced, Landscaped, Public Transportation, Schools, Shopping Nearby, See Remarks
Roof	Asphalt Shingles
Construction	Wood, Vinyl
Foundation	Concrete Perimeter

Additional Information

Date Listed	April 2nd, 2025
Days on Market	2
Zoning	Zone 24

DATA IS DEEMED RELIABLE BUT IS NOT GUARANTEED ACCURATE BY THE REALTORS® ASSOCIATION OF EDMONTON. COPYRIGHT 2025 BY THE REALTORS® ASSOCIATION OF EDMONTON. ALL RIGHTS RESERVED. Trademarks are owned or controlled by the Canadian Real Estate Association (CREA) and identify real estate professionals who are members of CREA (REALTOR®, REALTORS®) and/or the quality of services they provide (MLS®, Multiple Listing Service®)

Listing information last updated on April 4th, 2025 at 12:32pm MDT