

## \$349,900 - 14 2905 141 Street, Edmonton

MLS® #E4428623

**\$349,900**

2 Bedroom, 2.50 Bathroom, 1,376 sqft

Condo / Townhouse on 0.00 Acres

Chappelle Area, Edmonton, AB

Located in the family-friendly community of Chappelle, this move-in-ready townhouse offers modern comfort and practical living. This west-facing two-storey home features two generously sized bedrooms—each with its own ensuite bathroom and walk-in closet—plus an upper-level laundry room for added convenience. The main floor welcomes you with a bright, open-concept layout, highlighted by hardwood flooring, a functional kitchen with ample cabinetry, and a spacious living and dining area. Upstairs, cozy carpet flooring creates a warm, inviting space. Freshly painted, the home is ready for immediate possession. Additional highlights include a double detached garage, a private fenced front yard, and a modern split-level design that enhances the flow of the home. Located steps from schools, parks, shopping, and major commuter routes, this property is ideal for first-time buyers, families, or professionals seeking a low-maintenance lifestyle.

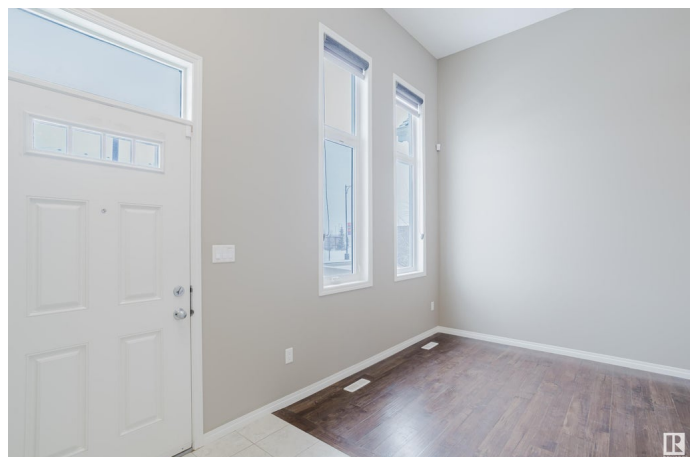
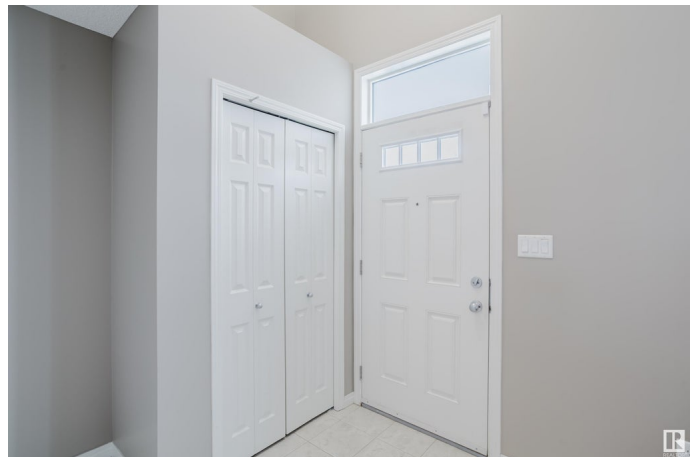
Built in 2015

### Essential Information

MLS® # E4428623

Price \$349,900

Bedrooms 2



Bathrooms	2.50
Full Baths	2
Half Baths	1
Square Footage	1,376
Acres	0.00
Year Built	2015
Type	Condo / Townhouse
Sub-Type	Townhouse
Style	2 Storey
Status	Active

### Community Information

Address	14 2905 141 Street
Area	Edmonton
Subdivision	Chappelle Area
City	Edmonton
County	ALBERTA
Province	AB
Postal Code	T6W 3M4

### Amenities

Amenities	See Remarks
Parking	Double Garage Detached

### Interior

Interior Features	ensuite bathroom
Appliances	Dishwasher-Built-In, Dryer, Garage Control, Garage Opener, Microwave Hood Fan, Refrigerator, Stove-Electric, Washer, TV Wall Mount
Heating	Forced Air-1, Natural Gas
Stories	2
Has Basement	Yes
Basement	Full, Unfinished

### Exterior

Exterior	Wood, Vinyl
Exterior Features	Airport Nearby, Fenced, Golf Nearby, Landscaped, Public Transportation, Schools, Shopping Nearby
Roof	Asphalt Shingles
Construction	Wood, Vinyl

Foundation                      Concrete Perimeter

**Additional Information**

Date Listed                      April 2nd, 2025  
Days on Market                14  
Zoning                              Zone 55  
HOA Fees                         426  
HOA Fees Freq.                Annually  
Condo Fee                        \$242

DATA IS DEEMED RELIABLE BUT IS NOT GUARANTEED ACCURATE BY THE REALTORS® ASSOCIATION OF EDMONTON. COPYRIGHT 2025 BY THE REALTORS® ASSOCIATION OF EDMONTON. ALL RIGHTS RESERVED.Trademarks are owned or controlled by the Canadian Real Estate Association (CREA) and identify real estate professionals who are members of CREA (REALTOR®, REALTORS®) and/or the quality of services they provide (MLS®, Multiple Listing Service®)  
Listing information last updated on April 16th, 2025 at 11:17am MDT