

\$675,000 - 4715 65 Street, Beaumont

MLS® #E4428791

\$675,000

3 Bedroom, 3.50 Bathroom, 2,261 sqft

Single Family on 0.00 Acres

Ruisseau, Beaumont, AB

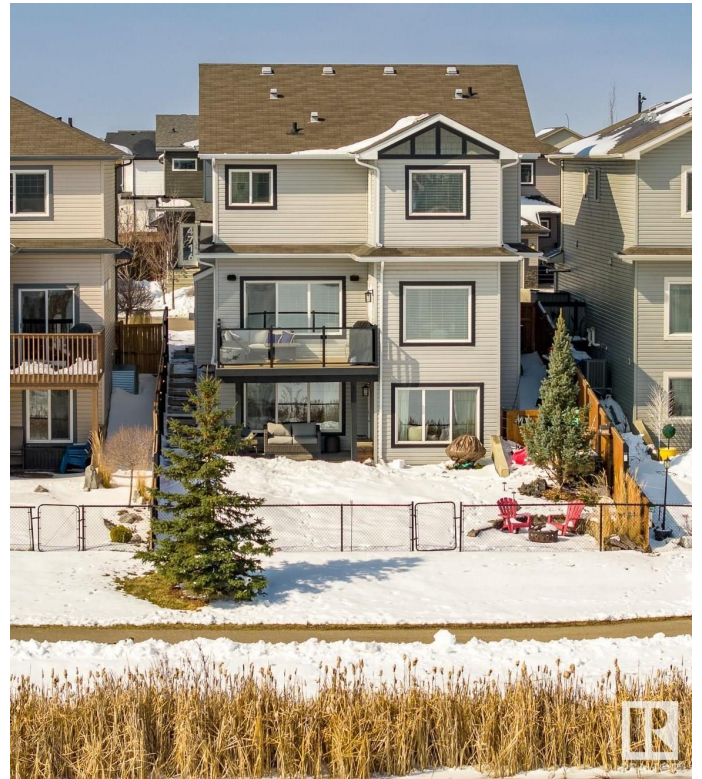
Stunning 2-Story Walkout Backing onto Pond & Trails This beautifully designed 2-story walkout offers breathtaking pond views and direct access to Beaumont's extensive walking path system, providing the perfect blend of nature and modern living. The sun-filled main floor features a spacious living and dining area, a den/flex room, offering versatility for a home office or playroom. The open-concept design is perfect for entertaining, with large windows that showcase the picturesque backyard. Upstairs, the primary suite is a true retreat, complete with a spa-like ensuite and walk-in closet. The second level also includes two great-sized bedrooms, a bonus room, and a convenient upstairs laundry, making family living effortless. The fully finished walkout basement features a separate entrance, offering endless possibilities all while enjoying the stunning pond views. Additional highlights include a heated garage, air conditioned a beautifully landscaped yard with a stamped concrete patio.

Built in 2015

Essential Information

MLS® # E4428791

Price \$675,000



Bedrooms	3
Bathrooms	3.50
Full Baths	3
Half Baths	1
Square Footage	2,261
Acres	0.00
Year Built	2015
Type	Single Family
Sub-Type	Detached Single Family
Style	2 Storey
Status	Active

Community Information

Address	4715 65 Street
Area	Beaumont
Subdivision	Ruisseau
City	Beaumont
County	ALBERTA
Province	AB
Postal Code	T4X 2A1

Amenities

Amenities	Air Conditioner, Walkout Basement
Parking	Double Garage Attached

Interior

Interior Features	ensuite bathroom
Appliances	Air Conditioning-Central, Dishwasher-Built-In, Dryer, Hood Fan, Refrigerator, Stove-Electric, Washer, Garage Heater
Heating	Forced Air-1, Natural Gas
Stories	3
Has Basement	Yes
Basement	Full, Finished

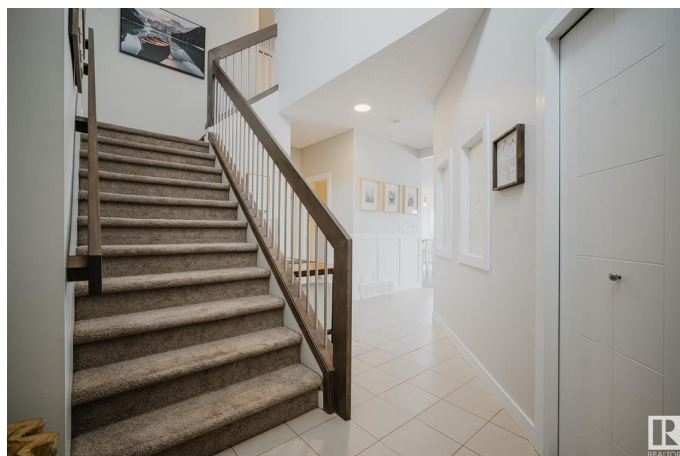
Exterior

Exterior	Wood, Vinyl
Exterior Features	Backs Onto Park/Trees, Fenced, Fruit Trees/Shrubs, Landscaped, Playground Nearby, Schools, Stream/Pond
Roof	Asphalt Shingles

Construction Wood, Vinyl
Foundation Concrete Perimeter

Additional Information

Date Listed April 3rd, 2025
Days on Market 8
Zoning Zone 82



DATA IS DEEMED RELIABLE BUT IS NOT GUARANTEED ACCURATE BY THE REALTORS® ASSOCIATION OF EDMONTON. COPYRIGHT 2025 BY THE REALTORS® ASSOCIATION OF EDMONTON. ALL RIGHTS RESERVED. Trademarks are owned or controlled by the Canadian Real Estate Association (CREA) and identify real estate professionals who are members of CREA (REALTOR®, REALTORS®) and/or the quality of services they provide (MLS®, Multiple Listing Service®)

Listing information last updated on April 11th, 2025 at 7:47pm MDT