

Courtesy Of Viktoriya V Finkbeiner Of Century 21 Leading

\$519,900 - 104 Woodside Crescent, Spruce Grove

MLS® #E4429030

\$519,900

5 Bedroom, 3.00 Bathroom, 1,496 sqft
Single Family on 0.00 Acres

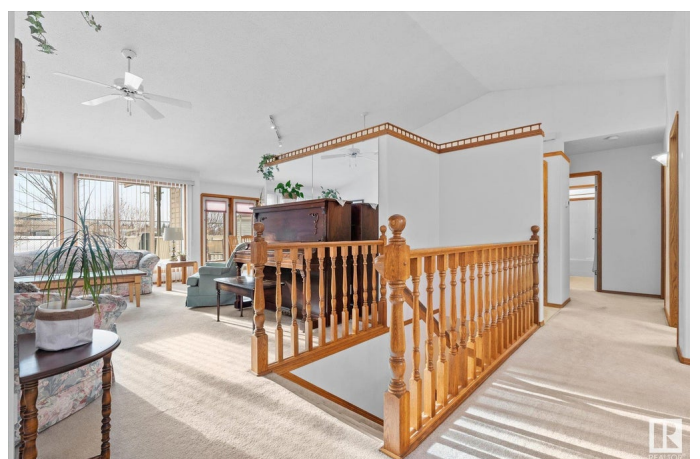
Woodside_SPGR, Spruce Grove, AB

IMMACULATE spacious bungalow, showing pride of ownership, located in a well thought out neighborhood of Woodside, which is just a no through traffic circle with a playground & walking distance to a number of schools - making it an amazing place to raise a family or retire! The home offers an ABUNDANCE of NATURAL light from large west facing windows! Formal dining area at the front (or can be a great flex space), living room with gas fireplace & west facing light coming in, open to eat in kitchen & french door to outdoor space. Main floor laundry is in the mud room on your way to the finished garage. Primary bedroom is spacious & offers with his & hers closets & bright ensuite! 2nd bedroom & main bath complete the main floor. Fully finished basement offers 3 more bedrooms & generous family area with small wet bar & utility room with plenty of storage! Enjoy beautiful sunsets in your fenced back yard with inground sprinklers! Roof 2017, 2 sump pumps 2019, HWT 2019, Furnace 2021, AC 2022, Most Windows 2022!

Built in 1992

Essential Information

MLS® #	E4429030
Price	\$519,900



Bedrooms	5
Bathrooms	3.00
Full Baths	3
Square Footage	1,496
Acres	0.00
Year Built	1992
Type	Single Family
Sub-Type	Detached Single Family
Style	Bungalow
Status	Active

Community Information

Address	104 Woodside Crescent
Area	Spruce Grove
Subdivision	Woodside_SPGR
City	Spruce Grove
County	ALBERTA
Province	AB
Postal Code	T7X 3E4

Amenities

Amenities	Air Conditioner, Closet Organizers, Deck, Fire Pit, No Animal Home, No Smoking Home, Vaulted Ceiling, Wood Windows
Parking Spaces	4
Parking	Double Garage Attached

Interior

Interior Features	ensuite bathroom
Appliances	Air Conditioning-Central, Dishwasher-Built-In, Dryer, Garage Control, Garage Opener, Microwave Hood Fan, Refrigerator, Stove-Electric, Washer, Window Coverings
Heating	Forced Air-1, Natural Gas
Fireplaces	Mantel
Stories	2
Has Basement	Yes
Basement	Full, Finished

Exterior

Exterior	Wood, Brick, Vinyl
----------	--------------------

Exterior Features	Backs Onto Park/Trees, Fenced, Landscaped, Playground Nearby, Public Transportation, Schools, Shopping Nearby
Roof	Asphalt Shingles
Construction	Wood, Brick, Vinyl
Foundation	Concrete Perimeter

School Information

Elementary	Brookwood
Middle	Woodhaven
High	Spruce Grove Comp

Additional Information

Date Listed	April 3rd, 2025
Days on Market	10
Zoning	Zone 91

DATA IS DEEMED RELIABLE BUT IS NOT GUARANTEED ACCURATE BY THE REALTORS® ASSOCIATION OF EDMONTON. COPYRIGHT 2025 BY THE REALTORS® ASSOCIATION OF EDMONTON. ALL RIGHTS RESERVED. Trademarks are owned or controlled by the Canadian Real Estate Association (CREA) and identify real estate professionals who are members of CREA (REALTOR®, REALTORS®) and/or the quality of services they provide (MLS®, Multiple Listing Service®)

Listing information last updated on April 13th, 2025 at 6:32am MDT