

Courtesy Of Tim Jeong Of RE/MAX River City

## \$559,900 - 20 Emery Court, St. Albert

MLS® #E4429284

**\$559,900**

4 Bedroom, 3.00 Bathroom, 2,026 sqft  
Single Family on 0.00 Acres

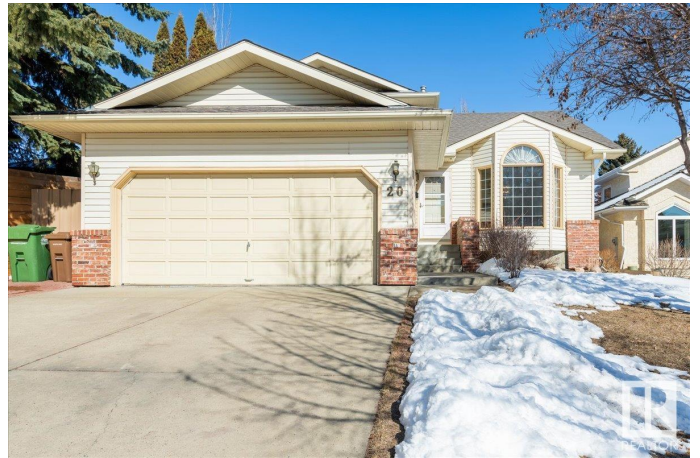
Erin Ridge, St. Albert, AB

Located in a quiet cul-de-sac in Erin Ridge, this stunning 4-bedroom side split with a double attached heated garage offers over 2,640 sq.ft. of living space and a HUGE park-like yard. The open floor plan features vaulted ceilings and a living room that flows into the formal dining area. The chef's kitchen boasts granite countertops, a tile backsplash, center island with pendant lighting, and stainless steel appliances. The dinette offers access to the back deck, perfect for outdoor relaxation. A cozy family room with a brick-faced fireplace, a bedroom, 3-piece bath, laundry, and garage access are on the lower level. Upstairs, the master suite includes a walk-in closet and 3-piece ensuite, with two more bedrooms and a 4-piece main bath. The fully developed basement includes a spacious rec room, storage, and crawl space. Enjoy countless hours in the fully fenced backyard, surrounded by mature trees. This home is a true must-see!

Built in 1990

### Essential Information

MLS® #	E4429284
Price	\$559,900
Bedrooms	4
Bathrooms	3.00



Full Baths	3
Square Footage	2,026
Acres	0.00
Year Built	1990
Type	Single Family
Sub-Type	Detached Single Family
Style	4 Level Split
Status	Active

### **Community Information**

Address	20 Emery Court
Area	St. Albert
Subdivision	Erin Ridge
City	St. Albert
County	ALBERTA
Province	AB
Postal Code	T8N 5T3

### **Amenities**

Amenities	Crawl Space, Deck, Vaulted Ceiling, See Remarks
Parking	Double Garage Attached

### **Interior**

Interior Features	ensuite bathroom
Appliances	Dishwasher-Built-In, Dryer, Garage Control, Garage Opener, Hood Fan, Oven-Microwave, Refrigerator, Stove-Electric, Vacuum System Attachments, Washer, Window Coverings, Garage Heater
Heating	Forced Air-1, Natural Gas
Fireplace	Yes
Fireplaces	Brass Surround, Mantel, See Remarks
Stories	4
Has Basement	Yes
Basement	Full, Finished

### **Exterior**

Exterior	Wood, Brick, Vinyl
Exterior Features	Cul-De-Sac, Fenced, Landscaped, Public Transportation, Schools, Shopping Nearby, See Remarks
Roof	Asphalt Shingles

Construction Wood, Brick, Vinyl  
Foundation Concrete Perimeter

### **Additional Information**

Date Listed April 5th, 2025  
Days on Market 8  
Zoning Zone 24

DATA IS DEEMED RELIABLE BUT IS NOT GUARANTEED ACCURATE BY THE REALTORS® ASSOCIATION OF EDMONTON. COPYRIGHT 2025 BY THE REALTORS® ASSOCIATION OF EDMONTON. ALL RIGHTS RESERVED. Trademarks are owned or controlled by the Canadian Real Estate Association (CREA) and identify real estate professionals who are members of CREA (REALTOR®, REALTORS®) and/or the quality of services they provide (MLS®, Multiple Listing Service®)

Listing information last updated on April 13th, 2025 at 5:17am MDT