

\$434,000 - 6 Greenwich Crescent, St. Albert

MLS® #E4430149

\$434,000

4 Bedroom, 2.00 Bathroom, 1,088 sqft

Single Family on 0.00 Acres

Grandin, St. Albert, AB

Welcome to this unique and original 4-level split in the family-friendly Grandin neighborhood. The main floor features a spacious living room with beautiful original hardwood floors and large windows. The freshly painted walls and the new flooring in the kitchen and front entrance add a modern touch. Head down to the lower level where you'll find a huge second living room with a vaulted ceiling, gas fireplace, and a patio door that leads to the backyard. Another bedroom, bathroom & large laundry room finish this level. 2 bedrooms and the main 4 pc bathroom are found on the top floor. The basement is home to a rec room, an additional bedroom and plenty of storage space. Updates include a new roof, soffit, fascia, and gutters (2015), windows (2023), HWT (2024), and one furnace (2023). The sewer line was replaced in the past 10 years. A fantastic home with plenty of space for your family. Close to schools, parks, walking trails and only 3 blocks from the outdoor pool! Some photos virtually staged.

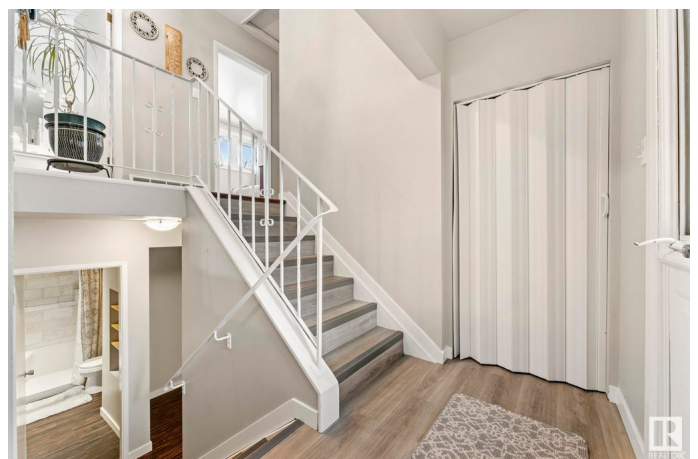
Built in 1962

Essential Information

MLS® # E4430149

Price \$434,000

Bedrooms 4



Bathrooms	2.00
Full Baths	2
Square Footage	1,088
Acres	0.00
Year Built	1962
Type	Single Family
Sub-Type	Detached Single Family
Style	4 Level Split
Status	Active

Community Information

Address	6 Greenwich Crescent
Area	St. Albert
Subdivision	Grandin
City	St. Albert
County	ALBERTA
Province	AB
Postal Code	T8N 0Z6

Amenities

Amenities	Deck, Vinyl Windows
Parking	Single Garage Attached

Interior

Appliances	Dishwasher-Built-In, Dryer, Freezer, Refrigerator, Stove-Electric, Washer, Window Coverings
Heating	Forced Air-2, Natural Gas
Stories	4
Has Basement	Yes
Basement	Full, Finished

Exterior

Exterior	Wood, Stone, Stucco, Vinyl
Exterior Features	Fenced, Fruit Trees/Shrubs, Playground Nearby, Public Swimming Pool, Public Transportation, Schools, Shopping Nearby
Roof	Asphalt Shingles, Roll Roofing
Construction	Wood, Stone, Stucco, Vinyl
Foundation	Concrete Perimeter

Additional Information

Date Listed April 10th, 2025

Days on Market 10

Zoning Zone 24

DATA IS DEEMED RELIABLE BUT IS NOT GUARANTEED ACCURATE BY THE REALTORS® ASSOCIATION OF EDMONTON. COPYRIGHT 2025 BY THE REALTORS® ASSOCIATION OF EDMONTON. ALL RIGHTS RESERVED. Trademarks are owned or controlled by the Canadian Real Estate Association (CREA) and identify real estate professionals who are members of CREA (REALTOR®, REALTORS®) and/or the quality of services they provide (MLS®, Multiple Listing Service®)

Listing information last updated on April 19th, 2025 at 10:32pm MDT