

Courtesy Of Katherine Bessette Of Real Broker

\$695,000 - 15105 77 Avenue, Edmonton

MLS® #E4430382

\$695,000

5 Bedroom, 3.00 Bathroom, 1,170 sqft

Single Family on 0.00 Acres

Rio Terrace, Edmonton, AB

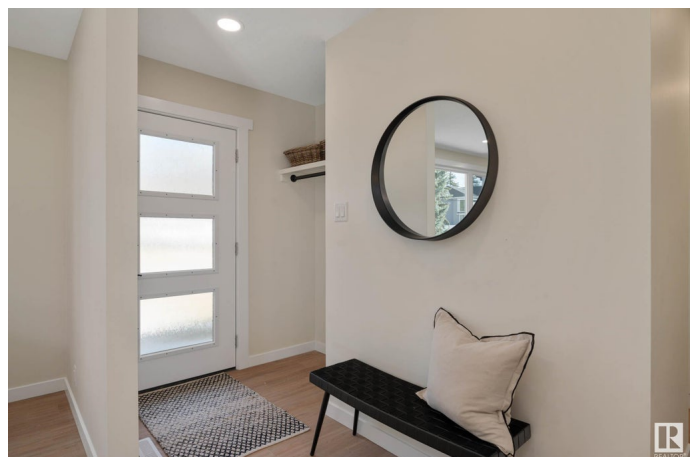
Professionally renovated and fully landscaped, this 5-bedroom, 3-bathroom, fully finished bungalow in Rio Terrace is now available. The property has undergone a stunning full renovation by STEP Contractors, featuring a spacious 6592 SqFt south-facing backyard perfect for family living. The main level offers bright, open concept living with large windows and sleek finishes, including three bedrooms and a beautifully appointed full bathroom with dual sinks. The kitchen is equipped with new SS appliances, gleaming quartz countertops, an island, and custom cabinetry. The lower level offers a large entertaining area, two spacious bedrooms, and an additional bathroom. Every aspect of the home is brand new, including Hardie Board siding, newer windows, doors, flooring, furnace, water tank, and fencing. Conveniently located within one block of Rio Terrace School, playgrounds, parks, and shops, this home is also within walking distance to river valley trails and a short drive to LOCA market and Laurier Dog Park.

Built in 1960

Essential Information

MLS® # E4430382

Price \$695,000



Bedrooms	5
Bathrooms	3.00
Full Baths	3
Square Footage	1,170
Acres	0.00
Year Built	1960
Type	Single Family
Sub-Type	Detached Single Family
Style	Bungalow
Status	Active

Community Information

Address	15105 77 Avenue
Area	Edmonton
Subdivision	Rio Terrace
City	Edmonton
County	ALBERTA
Province	AB
Postal Code	T5R 3B5

Amenities

Amenities	No Animal Home, No Smoking Home
Parking	Double Garage Detached, Heated, Tandem

Interior

Interior Features	ensuite bathroom
Appliances	Dishwasher-Built-In, Dryer, Garage Control, Garage Opener, Microwave Hood Fan, Oven-Microwave, Refrigerator, Stove-Electric, Washer
Heating	Forced Air-1, Natural Gas
Stories	2
Has Basement	Yes
Basement	Full, Finished

Exterior

Exterior	Wood, Stucco, Hardie Board Siding
Exterior Features	Fenced, Landscaped, No Back Lane, Private Setting, Public Transportation, Schools, Shopping Nearby, Vegetable Garden
Roof	Asphalt Shingles
Construction	Wood, Stucco, Hardie Board Siding

Foundation Concrete Perimeter

School Information

Elementary Patricia Heights
Middle H. E. Beriault
High St. Francis Xavier School

Additional Information

Date Listed April 11th, 2025
Days on Market 9
Zoning Zone 22

DATA IS DEEMED RELIABLE BUT IS NOT GUARANTEED ACCURATE BY THE REALTORS® ASSOCIATION OF EDMONTON. COPYRIGHT 2025 BY THE REALTORS® ASSOCIATION OF EDMONTON. ALL RIGHTS RESERVED.Trademarks are owned or controlled by the Canadian Real Estate Association (CREA) and identify real estate professionals who are members of CREA (REALTOR®, REALTORS®) and/or the quality of services they provide (MLS®, Multiple Listing Service®)
Listing information last updated on April 20th, 2025 at 12:47am MDT