

\$724,900 - 3520 Claxton Crescent, Edmonton

MLS® #E4431167

\$724,900

5 Bedroom, 3.50 Bathroom, 2,407 sqft

Single Family on 0.00 Acres

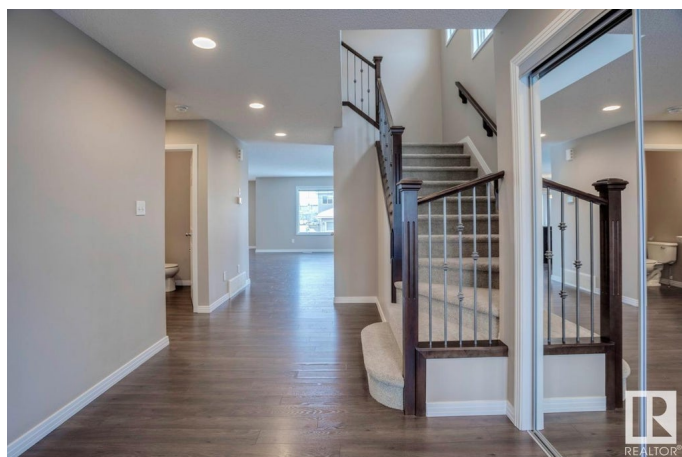
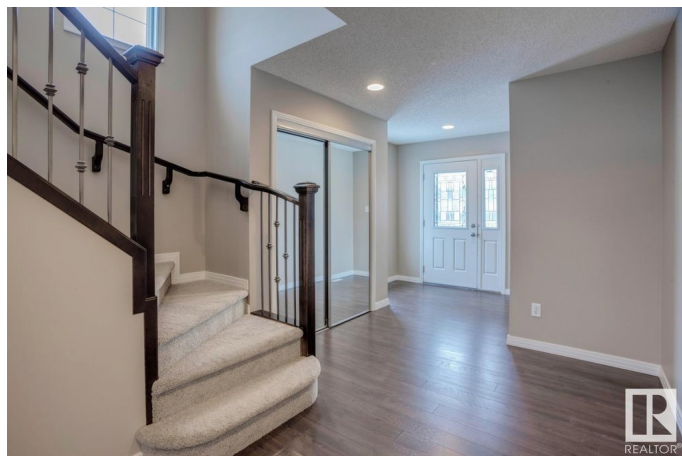
Chappelle Area, Edmonton, AB

Introducing the Evolve model by Bedrock Homes, a stunning 5-bedroom, 3.5-bath home with a 2-bedroom basement legal suite. The main floor boasts an open concept design, perfect for entertaining, featuring a spacious kitchen with a central island, leading to a cozy living area and a back deck for outdoor enjoyment. The highlight of the home is the open-to-above staircase, adding grandeur to the space. Upstairs, the bonus room with vaulted ceilings creates a bright retreat, while the master bedroom offers a luxurious 5-piece ensuite with double vanity and soaking tub. Two additional bedrooms, a full bath, and a convenient laundry room complete the upper level. The basement legal suite has its own side entrance, offering two bedrooms, a full kitchen with appliances, and separate laundry. With a double attached garage, this home provides style, space, and functionality for modern living. Located just 200M from the 10 acre creekwood park. Photos representative.

Built in 2013

Essential Information

MLS® #	E4431167
Price	\$724,900
Bedrooms	5
Bathrooms	3.50



Full Baths	3
Half Baths	1
Square Footage	2,407
Acres	0.00
Year Built	2013
Type	Single Family
Sub-Type	Detached Single Family
Style	2 Storey
Status	Active

Community Information

Address	3520 Claxton Crescent
Area	Edmonton
Subdivision	Chappelle Area
City	Edmonton
County	ALBERTA
Province	AB
Postal Code	T6W 0Z6

Amenities

Amenities	No Animal Home, No Smoking Home
Parking Spaces	4
Parking	Double Garage Attached

Interior

Interior Features	ensuite bathroom
Appliances	Dishwasher-Built-In, Dryer, Oven-Microwave, Refrigerator, Stove-Electric, Washer
Heating	Forced Air-1, Natural Gas
Fireplace	Yes
Fireplaces	Insert
Stories	3
Has Basement	Yes
Basement	Full, Finished

Exterior

Exterior	Wood, Stone, Vinyl
Exterior Features	Park/Reserve, Playground Nearby, Schools, Shopping Nearby
Roof	Asphalt Shingles

Construction	Wood, Stone, Vinyl
Foundation	Concrete Perimeter

Additional Information

Date Listed	April 16th, 2025
Days on Market	4
Zoning	Zone 55

DATA IS DEEMED RELIABLE BUT IS NOT GUARANTEED ACCURATE BY THE REALTORS® ASSOCIATION OF EDMONTON. COPYRIGHT 2025 BY THE REALTORS® ASSOCIATION OF EDMONTON. ALL RIGHTS RESERVED.Trademarks are owned or controlled by the Canadian Real Estate Association (CREA) and identify real estate professionals who are members of CREA (REALTOR®, REALTORS®) and/or the quality of services they provide (MLS®, Multiple Listing Service®)

Listing information last updated on April 19th, 2025 at 10:32pm MDT