

\$330,000 - 89 2503 24 Street, Edmonton

MLS® #E4431355

\$330,000

2 Bedroom, 2.50 Bathroom, 1,175 sqft

Condo / Townhouse on 0.00 Acres

Silver Berry, Edmonton, AB

Original owner of this amazing Silver Berry townhouse! This beautifully finished & immaculate 2 bedroom (both primary suites), 2.5 bathroom home is sure to impress the moment you walk in w/ its roomy floor plan and quality finishes. The main floor offers gorgeous hardwood and tile floors, big sunny windows, a spacious living area, a convenient half bath with laundry and a well designed kitchen that features stainless steel appliances, plenty of counter space, gorgeous cabinets w/ lots of storage and sizeable dining area. Upstairs you will find 2 primary bedrooms both w/ full bathrooms and walk in closets, Enjoy summer BBQ's on your back deck overlooking the fully fenced backyard complete with a handy storage shed. Other feat. include an attached garage, neutral paint throughout & a partially finished basement that includes an additional family room. Walking distance to the Meadows Recreation Centre, transit, schools, parks, playgrounds & countless amenities. There is nothing to do but move in and enjoy!

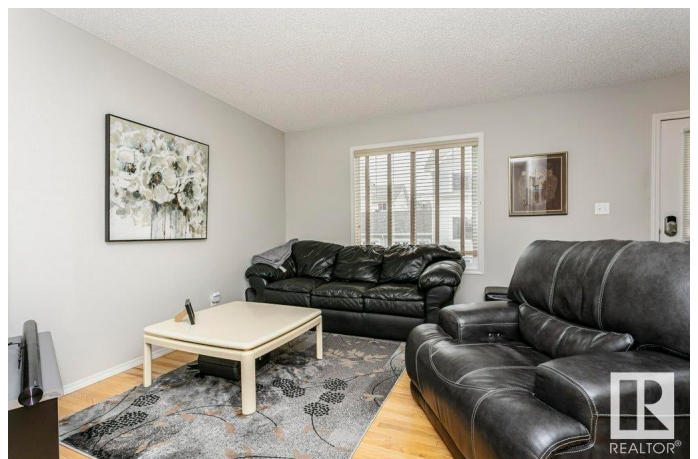
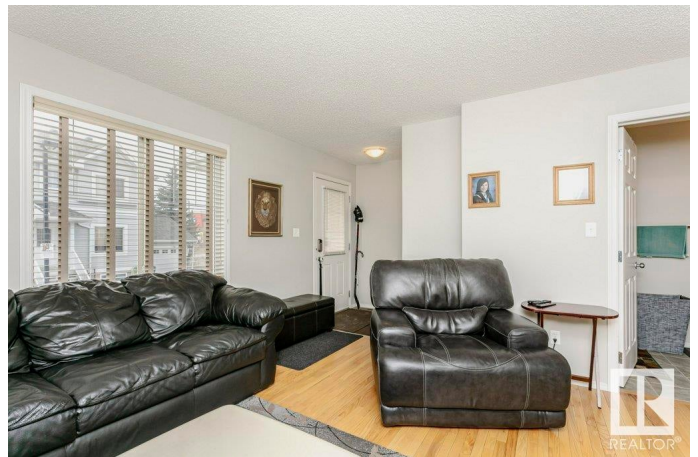
Built in 2006

Essential Information

MLS® # E4431355

Price \$330,000

Bedrooms 2



Bathrooms	2.50
Full Baths	2
Half Baths	1
Square Footage	1,175
Acres	0.00
Year Built	2006
Type	Condo / Townhouse
Sub-Type	Townhouse
Style	2 Storey
Status	Active

Community Information

Address	89 2503 24 Street
Area	Edmonton
Subdivision	Silver Berry
City	Edmonton
County	ALBERTA
Province	AB
Postal Code	T6T 0B5

Amenities

Amenities	Deck, No Animal Home, No Smoking Home
Parking	Single Garage Attached

Interior

Interior Features	ensuite bathroom
Appliances	Dishwasher-Built-In, Dryer, Garage Control, Garage Opener, Microwave Hood Fan, Refrigerator, Storage Shed, Stove-Electric, Washer, Window Coverings
Heating	Forced Air-1, Natural Gas
Stories	3
Has Basement	Yes
Basement	Full, Partially Finished

Exterior

Exterior	Wood, Vinyl
Exterior Features	Fenced, Flat Site, Golf Nearby, Landscaped, Playground Nearby, Public Transportation, Schools, Shopping Nearby
Roof	Asphalt Shingles

Construction	Wood, Vinyl
Foundation	Concrete Perimeter

Additional Information

Date Listed	April 17th, 2025
Days on Market	2
Zoning	Zone 30
Condo Fee	\$306

DATA IS DEEMED RELIABLE BUT IS NOT GUARANTEED ACCURATE BY THE REALTORS® ASSOCIATION OF EDMONTON. COPYRIGHT 2025 BY THE REALTORS® ASSOCIATION OF EDMONTON. ALL RIGHTS RESERVED.Trademarks are owned or controlled by the Canadian Real Estate Association (CREA) and identify real estate professionals who are members of CREA (REALTOR®, REALTORS®) and/or the quality of services they provide (MLS®, Multiple Listing Service®)

Listing information last updated on April 19th, 2025 at 5:17pm MDT