

Courtesy Of Timothy S Baker Of RE/MAX Edge Realty

# \$499,900 - 251 Savoy Crescent, Sherwood Park

MLS® #E4431688

**\$499,900**

3 Bedroom, 3.00 Bathroom, 1,836 sqft

Single Family on 0.00 Acres

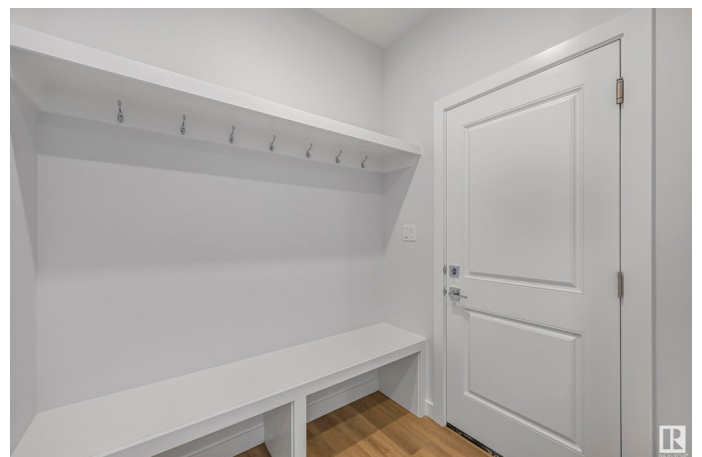
Summerwood, Sherwood Park, AB

Experience the ease and elegance of brand new duplex living in one of Sherwood Park's most desirable areas. This modern home features a bright and open floor plan with plenty of windows that flood the space with natural light, creating a warm and welcoming atmosphere. The kitchen is both functional and stylish, offering lots of counter space, abundant cabinetry, and an ideal setup for daily life or hosting guests. Upstairs, the layout continues to impress with a well-sized primary bedroom, convenient upper-level laundry, and additional bedrooms that offer flexibility for family, guests, or a home office. With fresh, contemporary finishes and a thoughtfully planned design, this home is perfect for anyone looking to enjoy the benefits of new construction in a connected, family-friendly community. Located close to parks, schools, and essential amenities!

Built in 2025

## Essential Information

MLS® #	E4431688
Price	\$499,900
Bedrooms	3
Bathrooms	3.00
Full Baths	3
Square Footage	1,836



Acres	0.00
Year Built	2025
Type	Single Family
Sub-Type	Half Duplex
Style	2 Storey
Status	Active

### **Community Information**

Address	251 Savoy Crescent
Area	Sherwood Park
Subdivision	Summerwood
City	Sherwood Park
County	ALBERTA
Province	AB
Postal Code	T8H 2Y4

### **Amenities**

Amenities	Ceiling 9 ft., 9 ft. Basement Ceiling
Parking Spaces	4
Parking	Double Garage Attached

### **Interior**

Interior Features	ensuite bathroom
Appliances	Garage Control, Garage Opener
Heating	Forced Air-1, Natural Gas
Fireplace	Yes
Fireplaces	Insert
Stories	2
Has Basement	Yes
Basement	Full, Unfinished

### **Exterior**

Exterior	Concrete, Stone, Vinyl
Exterior Features	Public Transportation, Schools, Shopping Nearby, See Remarks
Roof	Asphalt Shingles
Construction	Concrete, Stone, Vinyl
Foundation	Concrete Perimeter

### **School Information**

Elementary	Brentwood Elementary
Middle	Clover Bar Junior High
High	Bev Facey Community High

### **Additional Information**

Date Listed      April 18th, 2025

Days on Market    6

Zoning             Zone 25

DATA IS DEEMED RELIABLE BUT IS NOT GUARANTEED ACCURATE BY THE REALTORS® ASSOCIATION OF EDMONTON. COPYRIGHT 2025 BY THE REALTORS® ASSOCIATION OF EDMONTON. ALL RIGHTS RESERVED. Trademarks are owned or controlled by the Canadian Real Estate Association (CREA) and identify real estate professionals who are members of CREA (REALTOR®, REALTORS®) and/or the quality of services they provide (MLS®, Multiple Listing Service®)

Listing information last updated on April 24th, 2025 at 1:48pm MDT