

Courtesy Of Sarah N Middleton Of Sweetly

\$629,990 - 9838 159 Street, Edmonton

MLS® #E4432252

\$629,990

3 Bedroom, 2.50 Bathroom, 1,831 sqft
Single Family on 0.00 Acres

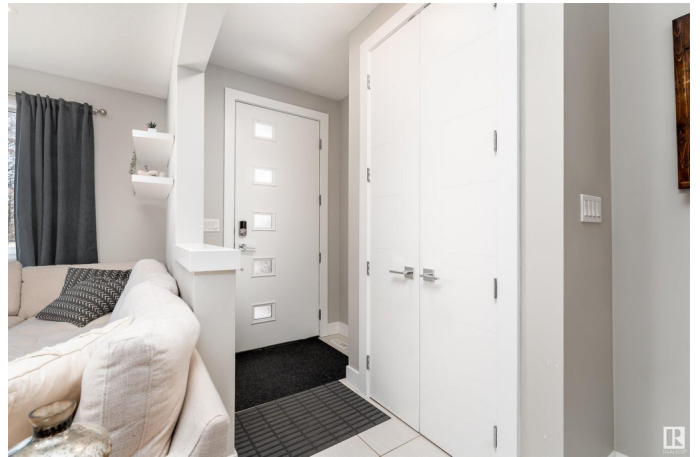
Glenwood (Edmonton), Edmonton, AB

Welcome to Glenwood! This luxury infill will not disappoint. Loaded with upgrades you typically only find in a much more expensive home, this modern two-storey stands apart from the rest. 5 ft wider than most skinnies, 9 ft ceilings on all three floors, 8 ft interior doors, triple pane windows, engineered hardwood, glass staircase, this home is one of a kind! From the front entry you will be impressed with the open-concept floor plan and the abundance of natural light throughout the main floor. A stunning chef's kitchen with custom cabinetry, huge island, granite counter tops, and upgraded stainless steel appliances (including gas stove) is the star of the show. Upstairs you'll find the primary bedroom with walk-in closet and spa-like ensuite bathroom. 2 additional bdrms as well as a full bath and bonus room complete the 2nd floor. A separate entrance to the basement allows for future legal suite potential. Plus, this home is just down the street from future west-side LRT line

Built in 2017

Essential Information

MLS® #	E4432252
Price	\$629,990
Bedrooms	3



Bathrooms	2.50
Full Baths	2
Half Baths	1
Square Footage	1,831
Acres	0.00
Year Built	2017
Type	Single Family
Sub-Type	Detached Single Family
Style	2 Storey
Status	Active

Community Information

Address	9838 159 Street
Area	Edmonton
Subdivision	Glenwood (Edmonton)
City	Edmonton
County	ALBERTA
Province	AB
Postal Code	T5P 2Z5

Amenities

Amenities	On Street Parking, Air Conditioner, Ceiling 9 ft., Deck, No Smoking Home, Infill Property, Natural Gas Stove Hookup, 9 ft. Basement Ceiling
Parking	Double Garage Detached

Interior

Interior Features	ensuite bathroom
Appliances	Air Conditioning-Central, Dishwasher-Built-In, Dryer, Garage Control, Garage Opener, Hood Fan, Refrigerator, Stove-Gas, Washer
Heating	Forced Air-1, Natural Gas
Fireplace	Yes
Fireplaces	Tile Surround
Stories	2
Has Basement	Yes
Basement	Full, Unfinished

Exterior

Exterior	Wood, Composition, Hardie Board Siding
Exterior Features	Back Lane, Fenced, Low Maintenance Landscape, Public

	Transportation, Schools, Shopping Nearby
Roof	Asphalt Shingles
Construction	Wood, Composition, Hardie Board Siding
Foundation	Concrete Perimeter

School Information

Elementary	Aleda Patterson School
Middle	Alex Janvier School
High	Jasper Place School

Additional Information

Date Listed	April 23rd, 2025
Days on Market	1
Zoning	Zone 22

DATA IS DEEMED RELIABLE BUT IS NOT GUARANTEED ACCURATE BY THE REALTORS® ASSOCIATION OF EDMONTON. COPYRIGHT 2025 BY THE REALTORS® ASSOCIATION OF EDMONTON. ALL RIGHTS RESERVED. Trademarks are owned or controlled by the Canadian Real Estate Association (CREA) and identify real estate professionals who are members of CREA (REALTOR®, REALTORS®) and/or the quality of services they provide (MLS®, Multiple Listing Service®)

Listing information last updated on April 24th, 2025 at 1:17pm MDT