

\$229,900 - 5758 172 Street, Edmonton

MLS® #E4432388

\$229,900

2 Bedroom, 2.00 Bathroom, 1,050 sqft

Condo / Townhouse on 0.00 Acres

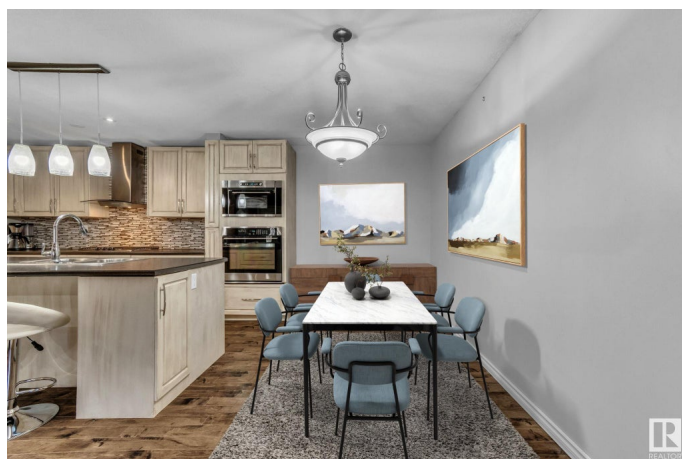
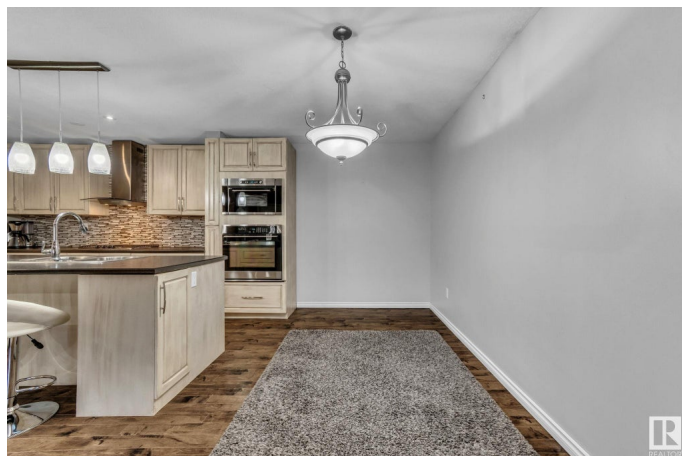
Gariepy, Edmonton, AB

Stunning! one of a kind carriage home redefined to create an amazing living space. This 2 bedroom now offers 2 full bathrooms, great for roomates or guests. Each bedroom has a walk in closet. This home has been substantially upgraded and features a chefs kitchen complete with a 7' island, custom cabinets, stainless appliances, counter top gas stove, built in oven and a built in microwave/convection oven. Newer laminate flooring throughout, all newer doors and trim. Main bathroom upgraded and second bathroom added in 2022. New furnace in 2023. Complex has many upgrades including windows, roofs, decks, and railings. The location of this unit is prime being an end unit facing a green space and lots of street parking available. It also has 2 parking stalls. Walking trails and the river valley all close by, as is all levels of schools, park and playground, outdoor rink, plenty of shopping and the bus stops right across the street.

Built in 1978

Essential Information

MLS® #	E4432388
Price	\$229,900
Bedrooms	2
Bathrooms	2.00



Full Baths	2
Square Footage	1,050
Acres	0.00
Year Built	1978
Type	Condo / Townhouse
Sub-Type	Carriage
Style	Bungalow
Status	Active

Community Information

Address	5758 172 Street
Area	Edmonton
Subdivision	Gariepy
City	Edmonton
County	ALBERTA
Province	AB
Postal Code	T6M 1B4

Amenities

Amenities	No Animal Home, No Smoking Home, Parking-Plug-Ins, Parking-Visitor
Parking Spaces	2
Parking	2 Outdoor Stalls, Tandem

Interior

Appliances	Dishwasher-Built-In, Dryer, Hood Fan, Refrigerator, Stove-Countertop Gas, Washer, Oven Built-In-Two
Heating	Forced Air-1, Natural Gas
Stories	1
Has Basement	Yes
Basement	None, No Basement

Exterior

Exterior	Wood
Exterior Features	Park/Reserve, Picnic Area, Playground Nearby, Public Transportation, Schools, Shopping Nearby
Roof	Asphalt Shingles
Construction	Wood
Foundation	Concrete Perimeter

Additional Information

Date Listed	April 24th, 2025
Days on Market	1
Zoning	Zone 20
Condo Fee	\$435

DATA IS DEEMED RELIABLE BUT IS NOT GUARANTEED ACCURATE BY THE REALTORS® ASSOCIATION OF EDMONTON. COPYRIGHT 2025 BY THE REALTORS® ASSOCIATION OF EDMONTON. ALL RIGHTS RESERVED. Trademarks are owned or controlled by the Canadian Real Estate Association (CREA) and identify real estate professionals who are members of CREA (REALTOR®, REALTORS®) and/or the quality of services they provide (MLS®, Multiple Listing Service®)

Listing information last updated on April 25th, 2025 at 2:47pm MDT